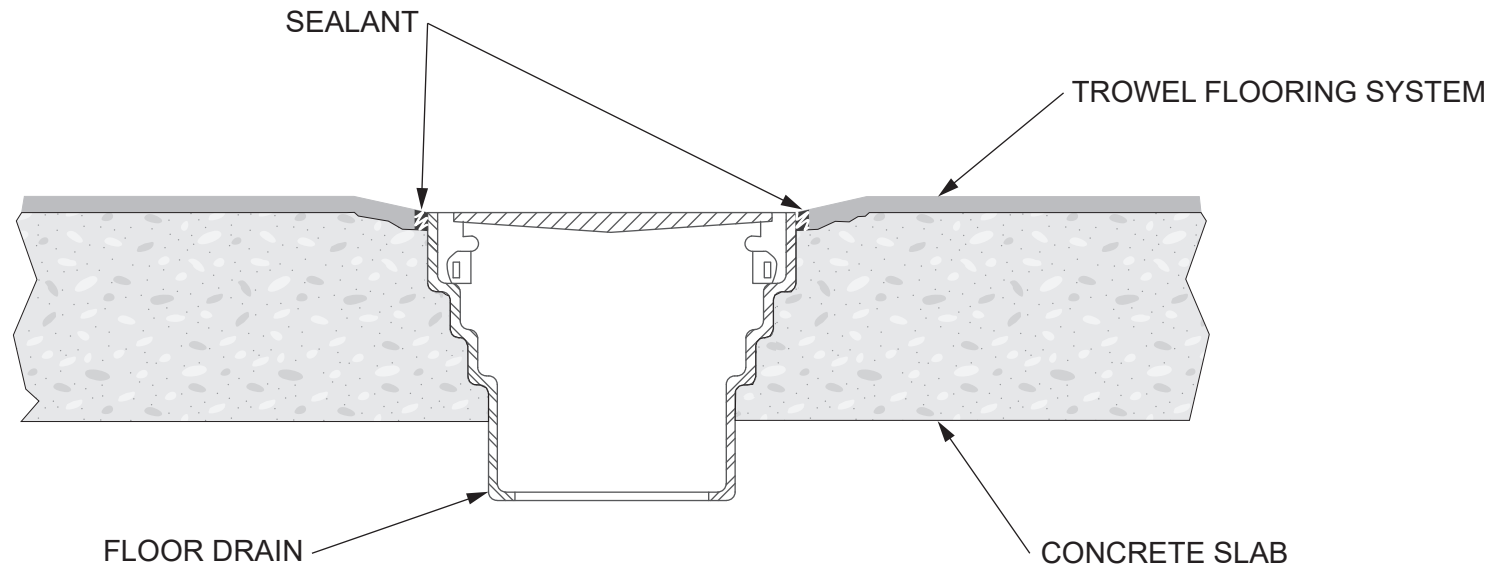


# NeoQuartz

## Table of Contents

<b>Detail, Area Drain</b>	Detail Drawings	English	<b>2</b>
<b>Detail, Cove to Prefabricated Wall</b>	Detail Drawings	English	<b>3</b>
<b>Detail, Expansion/Isolation joint</b>	Detail Drawings	English	<b>4</b>
<b>Detail, Horizontal/Vertical Termination Cant Cove</b>	Detail Drawings	English	<b>5</b>
<b>Detail, Horizontal/Vertical Termination w/o Cove Strip</b>	Detail Drawings	English	<b>6</b>
<b>Detail, Major Concrete Repair</b>	Detail Drawings	English	<b>7</b>
<b>Detail, Crack with No Movement</b>	Detail Drawings	English	<b>8</b>
<b>Detail, Existing Saw Cut Joint Treatment</b>	Detail Drawings	English	<b>9</b>
<b>Detail, Smooth Troweled Cove Base</b>	Detail Drawings	English	<b>10</b>
<b>Detail, Flooring Area Drain</b>	Detail Drawings	English	<b>11</b>
<b>Detail, Control Joint</b>	Detail Drawings	English	<b>12</b>
<b>Detail, Prefabricated Trench Drain</b>	Detail Drawings	English	<b>13</b>



Note: This detail is utilized in the specification and design of fluid-applied flooring, in both new and retrofit applications. It is provided to show a generally recommended procedure for dealing with the condition shown. It will not and cannot provide a specific solution for every condition likely to be encountered in field application. Where field conditions differ, the use of applicable portions of the detail shown or its adaptation by an experienced and conscientious applicator should result in a quality project.



2728 Empire Central  
Dallas, Texas 75236  
(214)-353-1600  
www.neogard.com

Project:

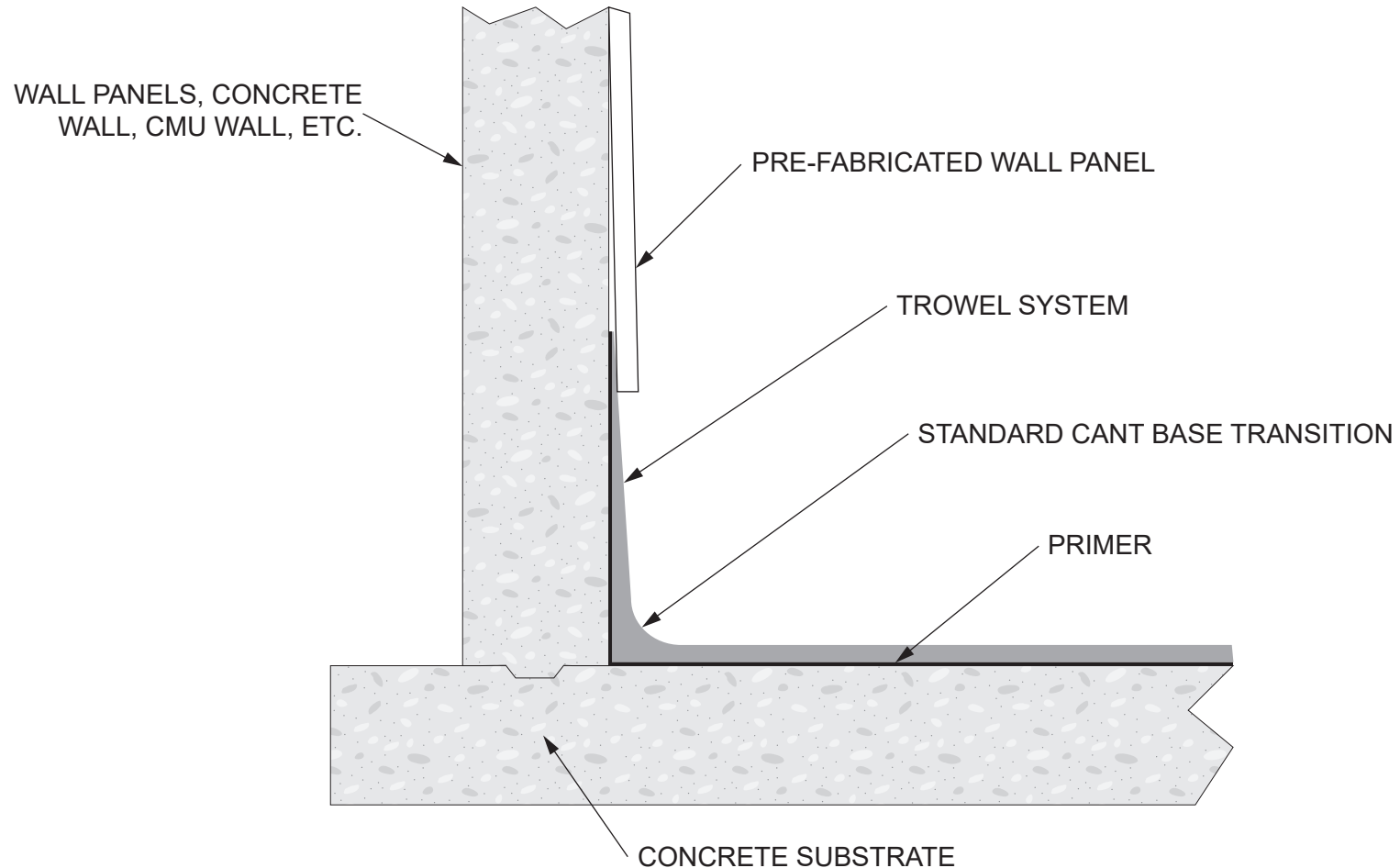
Area Drain Detail

Drawn by:  
K. Kirby

Scale:  
NTS

Date:  
03/30/2020

Drawing/Index No.  
FLOR\_area-drain-web-03302020



Note: This detail is utilized in the specification and design of fluid-applied flooring, in both new and retrofit applications. It is provided to show a generally recommended procedure for dealing with the condition shown. It will not and cannot provide a specific solution for every condition likely to be encountered in field application. Where field conditions differ, the use of applicable portions of the detail shown or its adaptation by an experienced and conscientious applicator should result in a quality project.



2728 Empire Central  
Dallas, Texas 75236  
(214)-353-1600  
www.neogard.com

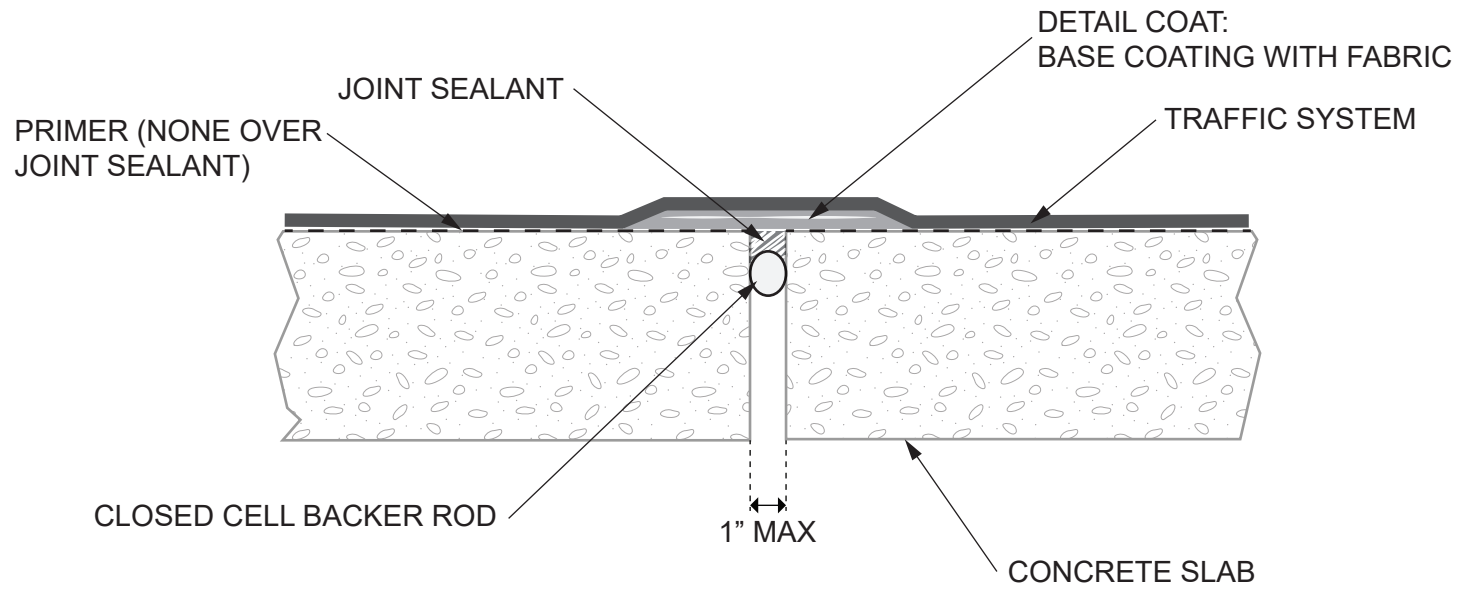
Project: Standard Cove Base Transition  
to Pre-Fabricated Wall System

Drawn by:  
K. Kirby

Scale:  
NTS

Date:  
03/30/2020

Drawing/Index No.  
FLOR\_cove-to-prefab-03302020



Note: This detail is utilized in the specification and design of fluid-applied flooring, in both new and retrofit applications. It is provided to show a generally recommended procedure for dealing with the condition shown. It will not and cannot provide a specific solution for every condition likely to be encountered in field application. Where field conditions differ, the use of applicable portions of the detail shown or its adaptation by an experienced and conscientious applicator should result in a quality project.



2728 Empire Central  
Dallas, Texas 75236  
(214)-353-1600  
www.neogard.com

Project:

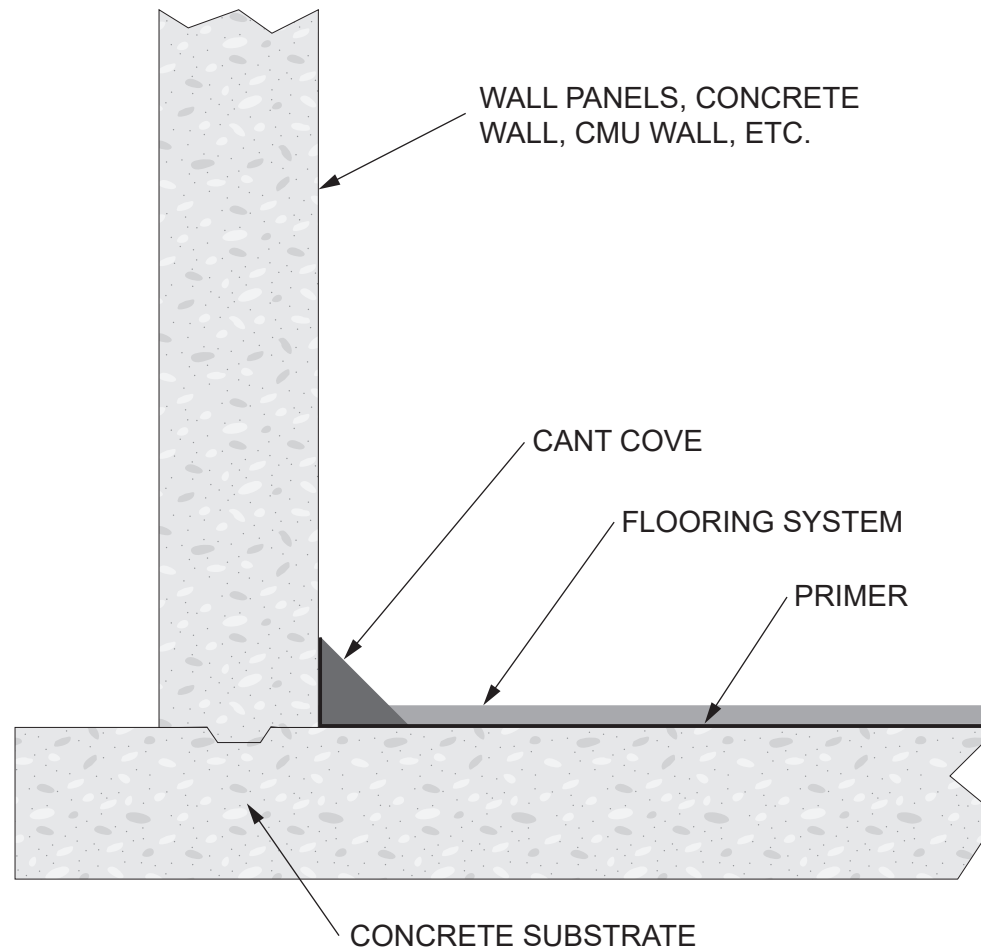
Expansion/Isolation Joint

Drawn by:  
K. Kirby

Scale:  
NTS

Date:  
03/30/2020

Drawing/Index No.  
FLOR\_ex-iso-joint-03302020

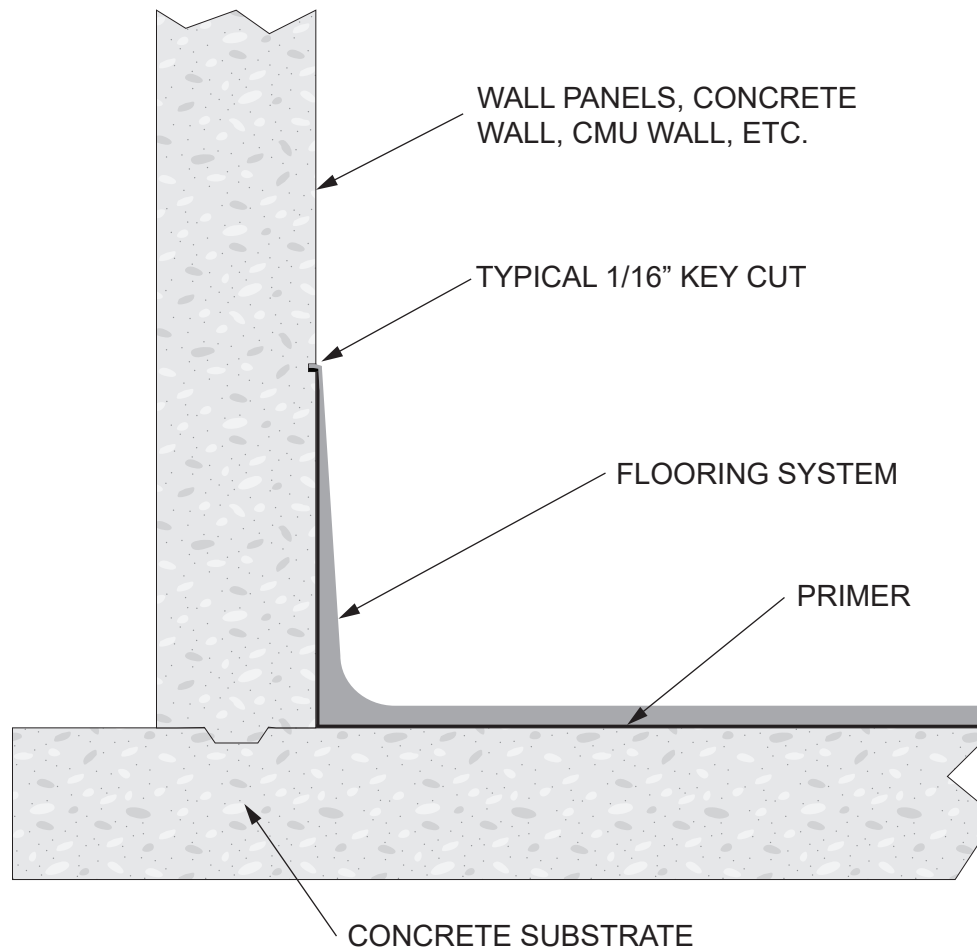


Note: This detail is utilized in the specification and design of fluid-applied flooring, in both new and retrofit applications. It is provided to show a generally recommended procedure for dealing with the condition shown. It will not and cannot provide a specific solution for every condition likely to be encountered in field application. Where field conditions differ, the use of applicable portions of the detail shown or its adaptation by an experienced and conscientious applicator should result in a quality project.



2728 Empire Central  
Dallas, Texas 75236  
(214)-353-1600  
www.neogard.com

Project: Horizontal/Vertical Termination Cant Cove			
Drawn by: K. Kirby	Scale: NTS	Date: 03/30/2020	Drawing/Index No. FLOR_hv-term-cant-cove-03302020



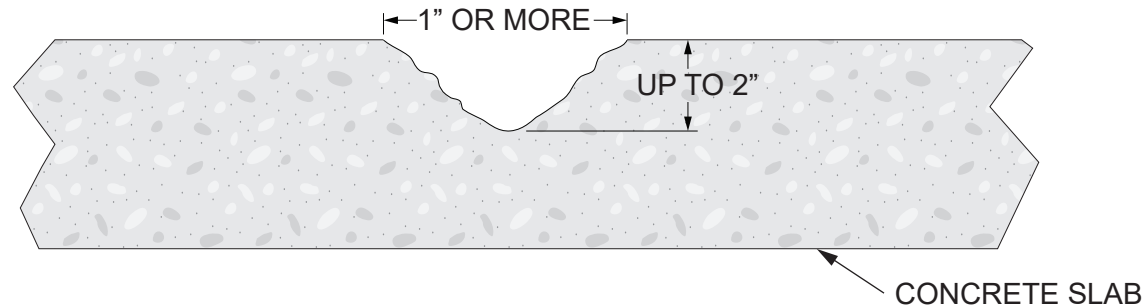
Note: This detail is utilized in the specification and design of fluid-applied flooring, in both new and retrofit applications. It is provided to show a generally recommended procedure for dealing with the condition shown. It will not and cannot provide a specific solution for every condition likely to be encountered in field application. Where field conditions differ, the use of applicable portions of the detail shown or its adaptation by an experienced and conscientious applicator should result in a quality project.



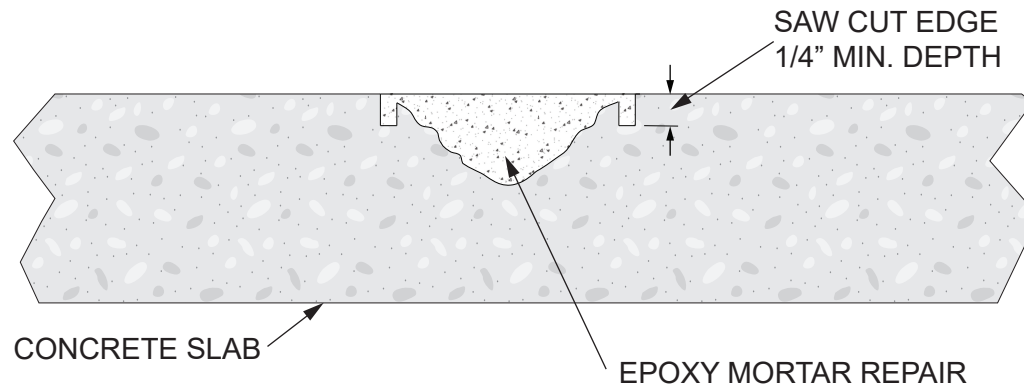
2728 Empire Central  
Dallas, Texas 75236  
(214)-353-1600  
www.neogard.com

Project:  
Horizontal/Vertical Termination Without Cove Strip

Drawn by: K. Kirby	Scale: NTS	Date: 03/30/2020	Drawing/Index No. FLOR_hv-term-wo-cove-strip-03302020
-----------------------	---------------	---------------------	--



**EXISTING CONDITION**



**EPOXY MORTAR REPAIR**

- Clean and solvent wipe concrete.
- Mix 70714/70715 or 70714/70715-09 with 20/40 silica sand at a ratio of 1:4 and fill, pack and trowel flush.

Note: This detail is utilized in the specification and design of fluid-applied flooring, in both new and retrofit applications. It is provided to show a generally recommended procedure for dealing with the condition shown. It will not and cannot provide a specific solution for every condition likely to be encountered in field application. Where field conditions differ, the use of applicable portions of the detail shown or its adaptation by an experienced and conscientious applicator should result in a quality project.



2728 Empire Central  
Dallas, Texas 75236  
(214)-353-1600  
www.neogard.com

Project:

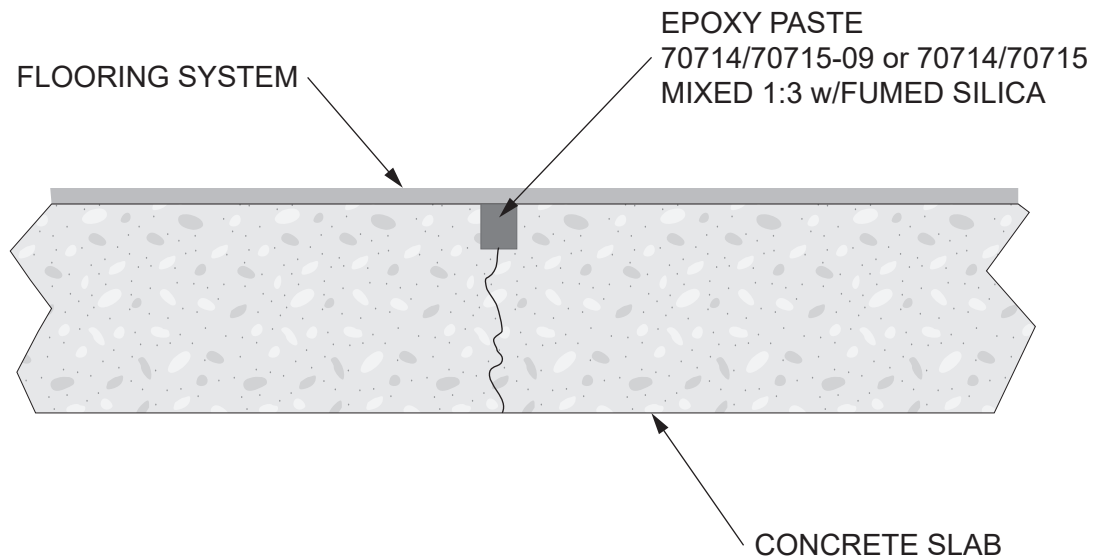
**Major Concrete Repair**

Drawn by:  
K. Kirby

Scale:  
NTS

Date:  
03/30/2020

Drawing/Index No.  
FLOR\_major-concrete-03302020



Note: This detail is utilized in the specification and design of fluid-applied flooring, in both new and retrofit applications. It is provided to show a generally recommended procedure for dealing with the condition shown. It will not and cannot provide a specific solution for every condition likely to be encountered in field application. Where field conditions differ, the use of applicable portions of the detail shown or its adaptation by an experienced and conscientious applicator should result in a quality project.



2728 Empire Central  
Dallas, Texas 75236  
(214)-353-1600  
www.neogard.com

Project:

Random Crack Detail Without Movement

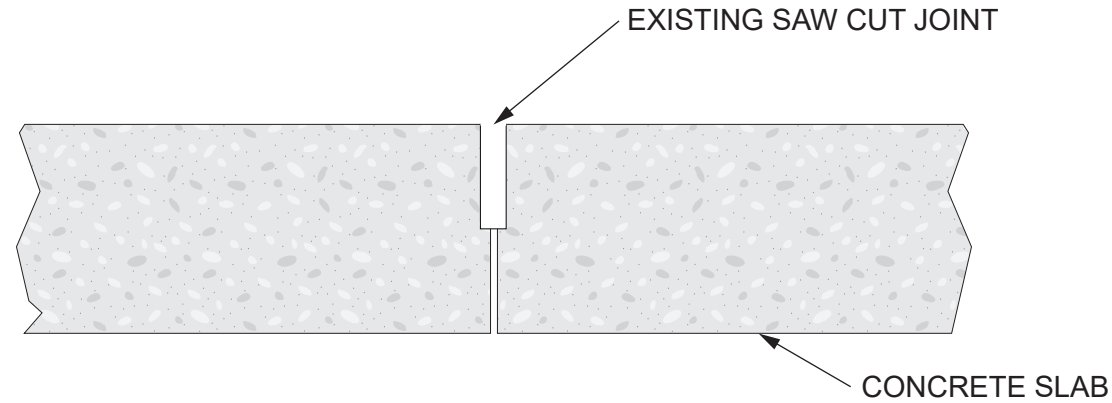
Drawn by:  
K. Kirby

Scale:  
NTS

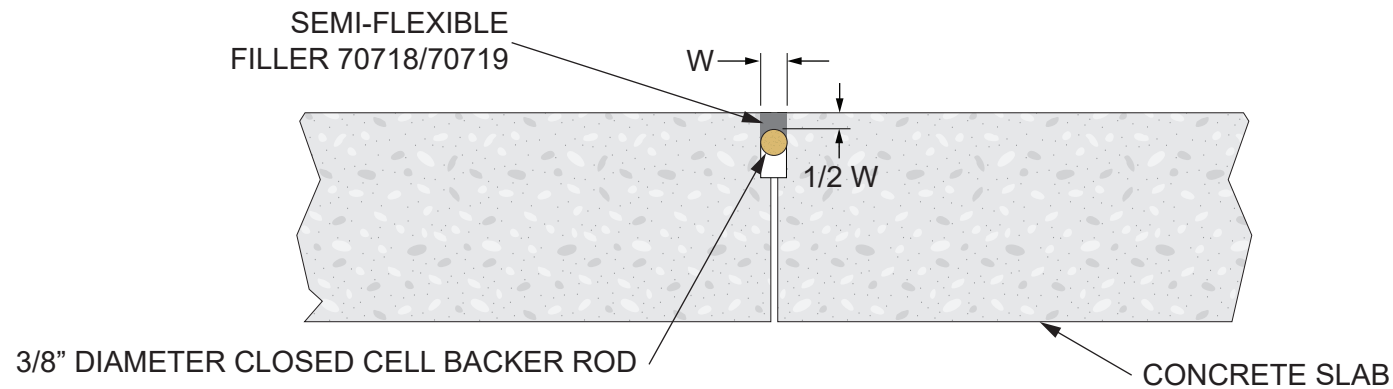
Date:  
03/30/2020

Drawing/Index No.  
FLOR\_random-crack-no-move-03302020





**EXISTING CONDITION**



**JOINT TREATMENT**

Note: This detail is utilized in the specification and design of fluid-applied flooring, in both new and retrofit applications. It is provided to show a generally recommended procedure for dealing with the condition shown. It will not and cannot provide a specific solution for every condition likely to be encountered in field application. Where field conditions differ, the use of applicable portions of the detail shown or its adaptation by an experienced and conscientious applicator should result in a quality project.



2728 Empire Central  
Dallas, Texas 75236  
(214)-353-1600  
www.neogard.com

Project:

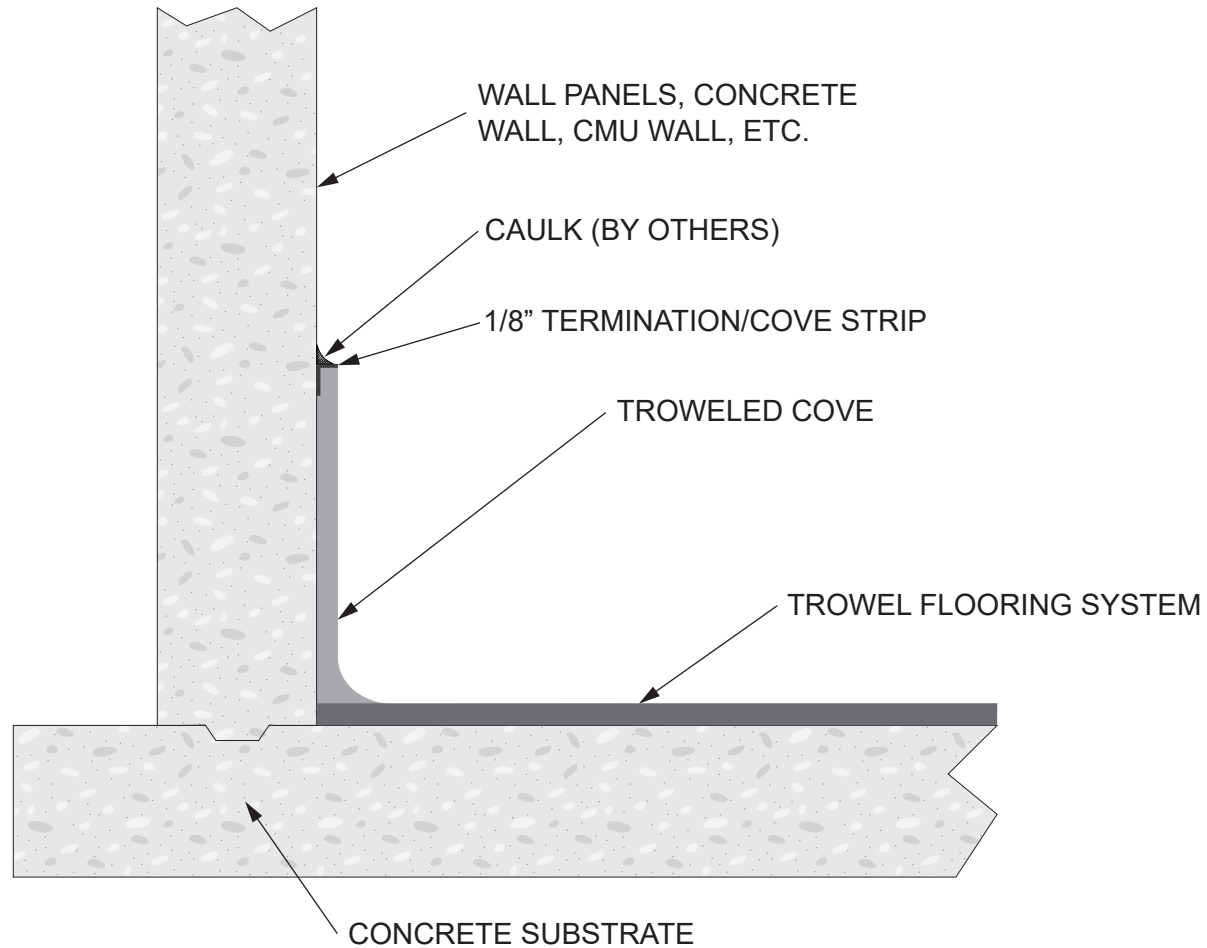
Existing Saw Cut Joint Treatment

Drawn by:  
K. Kirby

Scale:  
NTS

Date:  
03/30/2020

Drawing/Index No.  
FLOR\_saw-cut-joint-03302020



Note: This detail is utilized in the specification and design of fluid-applied flooring, in both new and retrofit applications. It is provided to show a generally recommended procedure for dealing with the condition shown. It will not and cannot provide a specific solution for every condition likely to be encountered in field application. Where field conditions differ, the use of applicable portions of the detail shown or its adaptation by an experienced and conscientious applicator should result in a quality project.



2728 Empire Central  
Dallas, Texas 75236  
(214)-353-1600  
www.neogard.com

Project:

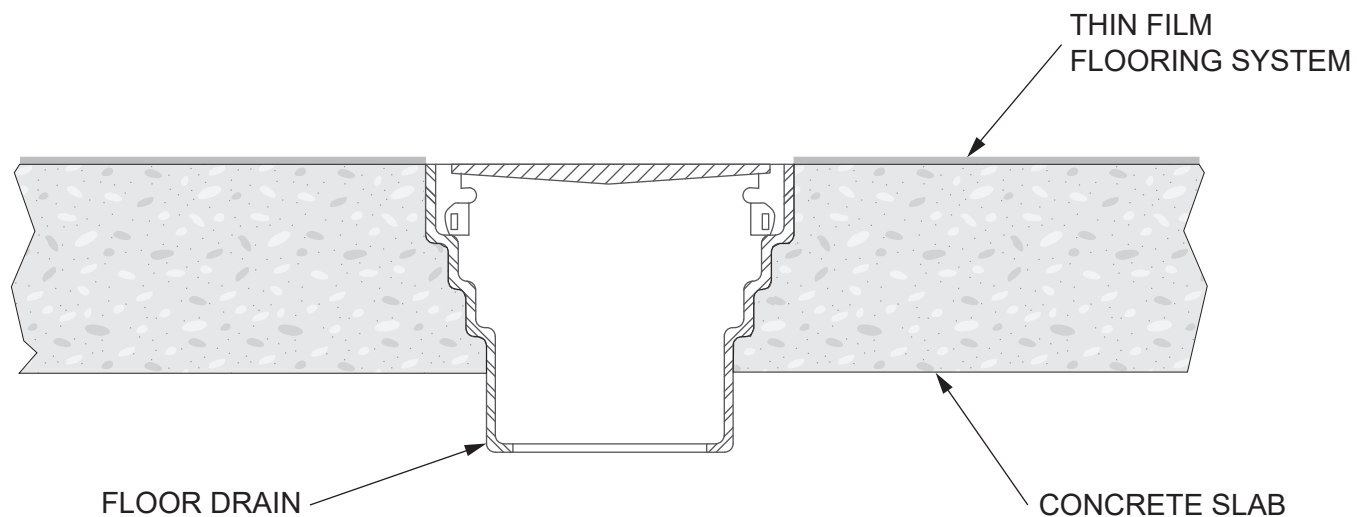
Standard Smooth Troweled Flooring Cove Base

Drawn by:  
K. Kirby

Scale:  
NTS

Date:  
03/30/2020

Drawing/Index No.  
FLOR\_standard-smooth-troweled-03302020



Note: This detail is utilized in the specification and design of fluid-applied flooring, in both new and retrofit applications. It is provided to show a generally recommended procedure for dealing with the condition shown. It will not and cannot provide a specific solution for every condition likely to be encountered in field application. Where field conditions differ, the use of applicable portions of the detail shown or its adaptation by an experienced and conscientious applicator should result in a quality project.



2728 Empire Central  
Dallas, Texas 75236  
(214)-353-1600  
www.neogard.com

Project:

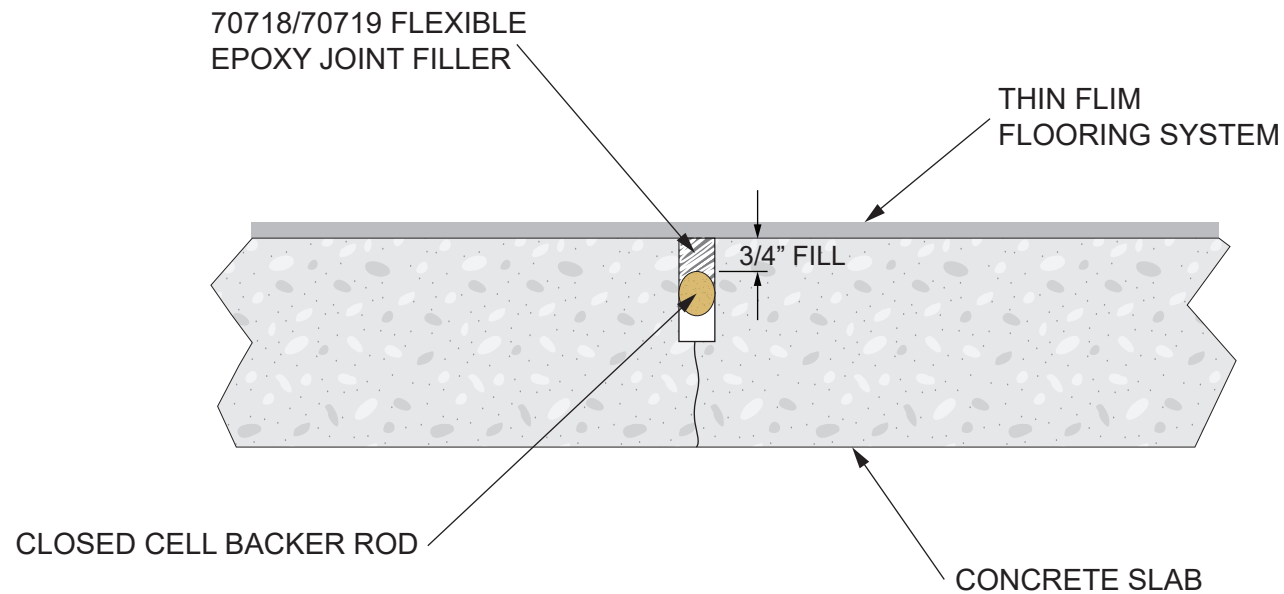
Thin Film Flooring Area Drain

Drawn by:  
K. Kirby

Scale:  
NTS

Date:  
03/30/2020

Drawing/Index No.  
FLOR\_thin-film-area-drain-03302020



Note: This detail is utilized in the specification and design of fluid-applied flooring, in both new and retrofit applications. It is provided to show a generally recommended procedure for dealing with the condition shown. It will not and cannot provide a specific solution for every condition likely to be encountered in field application. Where field conditions differ, the use of applicable portions of the detail shown or its adaptation by an experienced and conscientious applicator should result in a quality project.



2728 Empire Central  
Dallas, Texas 75236  
(214)-353-1600  
www.neogard.com

Project:

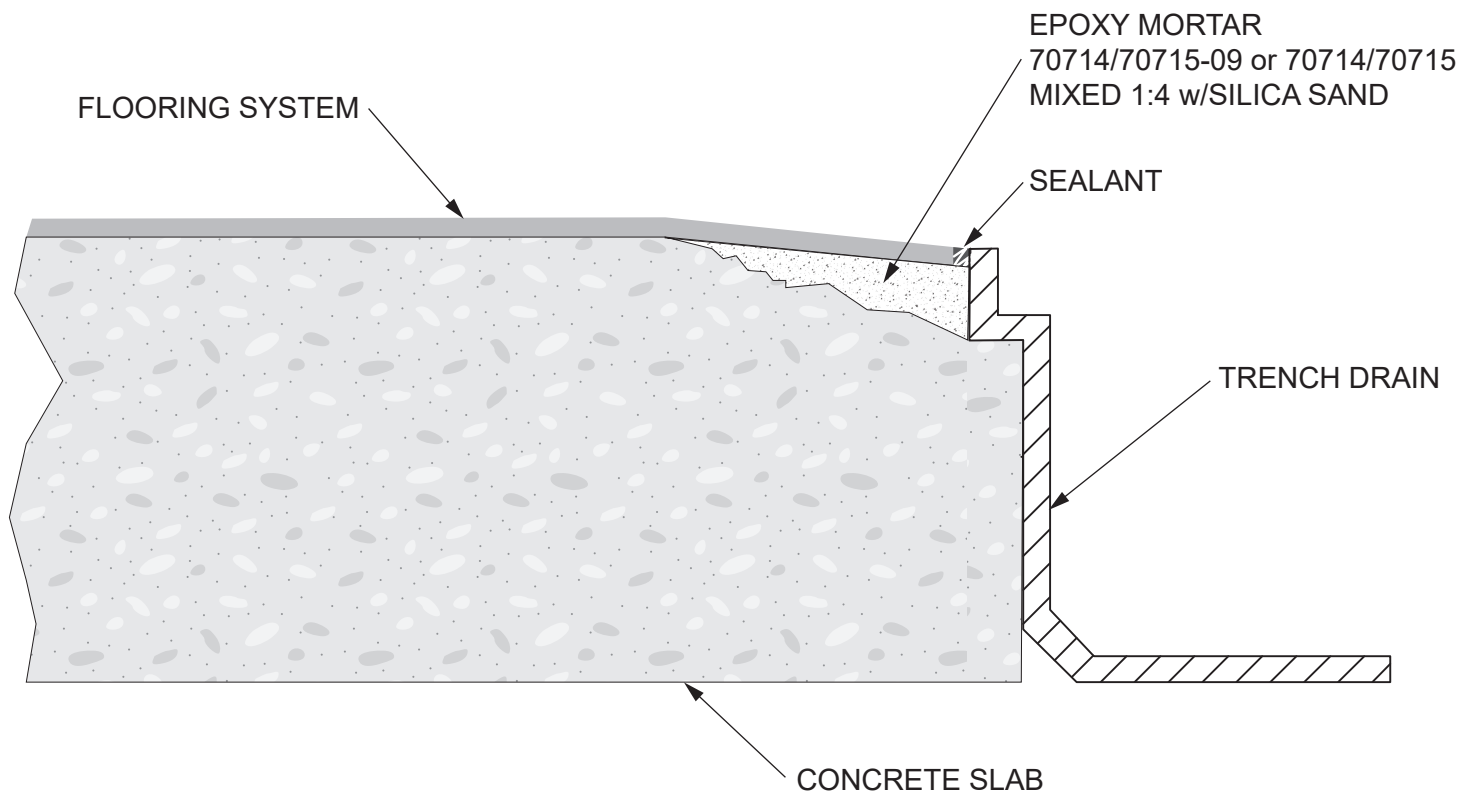
Thin Film Flooring Control Joint

Drawn by:  
K. Kirby

Scale:  
NTS

Date:  
03/30/2020

Drawing/Index No.  
FLOR\_thin-film-control-joint-03302020



Note: This detail is utilized in the specification and design of fluid-applied flooring, in both new and retrofit applications. It is provided to show a generally recommended procedure for dealing with the condition shown. It will not and cannot provide a specific solution for every condition likely to be encountered in field application. Where field conditions differ, the use of applicable portions of the detail shown or its adaptation by an experienced and conscientious applicator should result in a quality project.



2728 Empire Central  
Dallas, Texas 75236  
(214)-353-1600  
www.neogard.com

Project:

Prefabricated Trench Drain

Drawn by:  
K. Kirby

Scale:  
NTS

Date:  
03/30/2020

Drawing/Index No.  
FLOR\_trench-drain-03302020