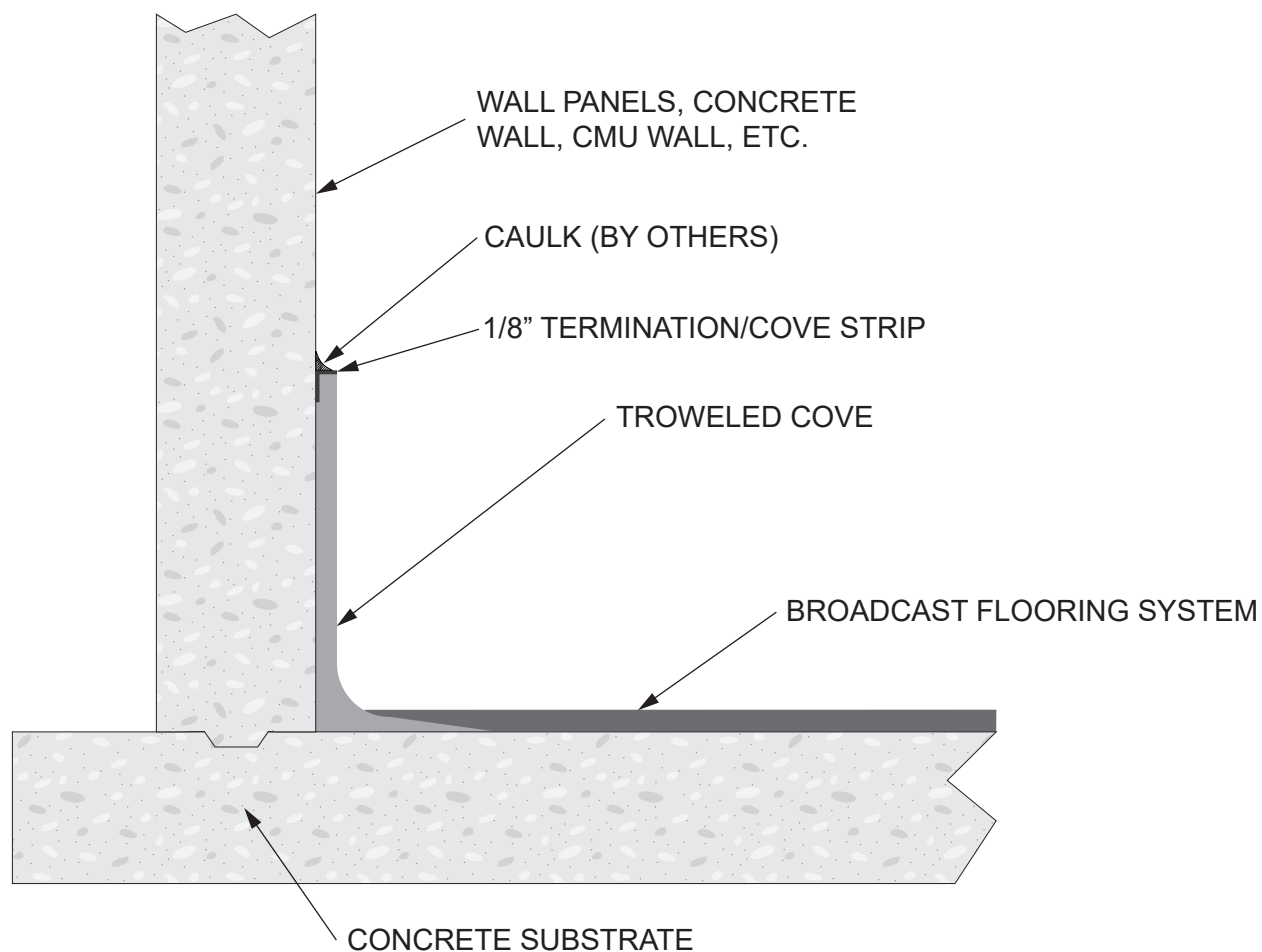


IT Epoxy Cove Base

Table of Contents

Detail, Standard Cove Base	Detail Drawings	English	2
Detail, Cove to Prefabricated Wall	Detail Drawings	English	3
Detail, Horizontal/Vertical Termination Cant Cove	Detail Drawings	English	4
Detail, Standard Trowel Cove Base	Detail Drawings	English	5
Detail, Smooth Troweled Cove Base	Detail Drawings	English	6
Detail, Prefabricated Trench Drain	Detail Drawings	English	7



Note: This detail is utilized in the specification and design of fluid-applied flooring, in both new and retrofit applications. It is provided to show a generally recommended procedure for dealing with the condition shown. It will not and cannot provide a specific solution for every condition likely to be encountered in field application. Where field conditions differ, the use of applicable portions of the detail shown or its adaptation by an experienced and conscientious applicator should result in a quality project.



2728 Empire Central
Dallas, Texas 75236
(214)-353-1600
www.neogard.com

Project:

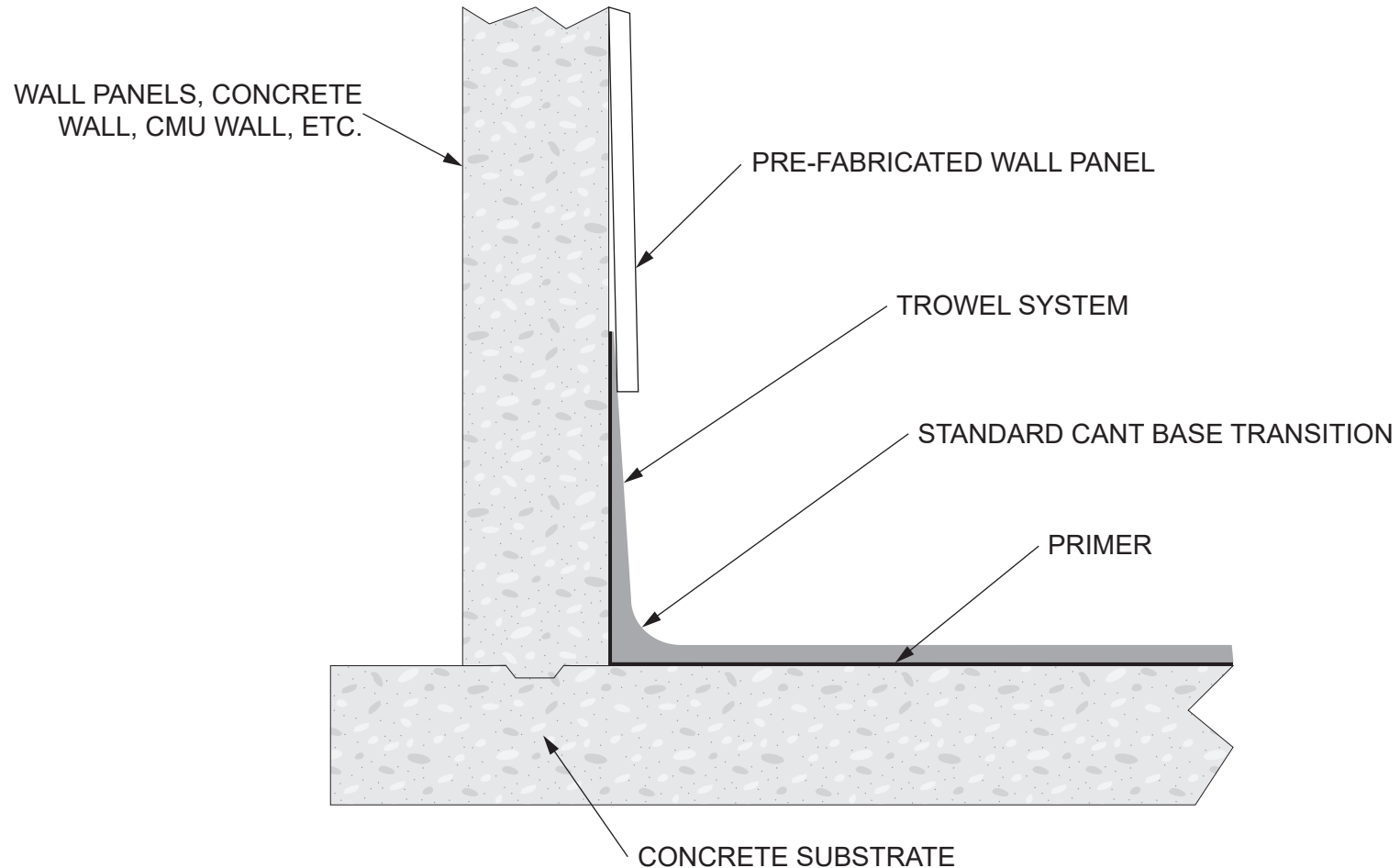
Standard Broadcast Flooring Cove Base

Drawn by:
K. Kirby

Scale:
NTS

Date:
03/30/2020

Drawing/Index No.
FLOR_bc-cove-base-03302020



Note: This detail is utilized in the specification and design of fluid-applied flooring, in both new and retrofit applications. It is provided to show a generally recommended procedure for dealing with the condition shown. It will not and cannot provide a specific solution for every condition likely to be encountered in field application. Where field conditions differ, the use of applicable portions of the detail shown or its adaptation by an experienced and conscientious applicator should result in a quality project.



2728 Empire Central
Dallas, Texas 75236
(214)-353-1600
www.neogard.com

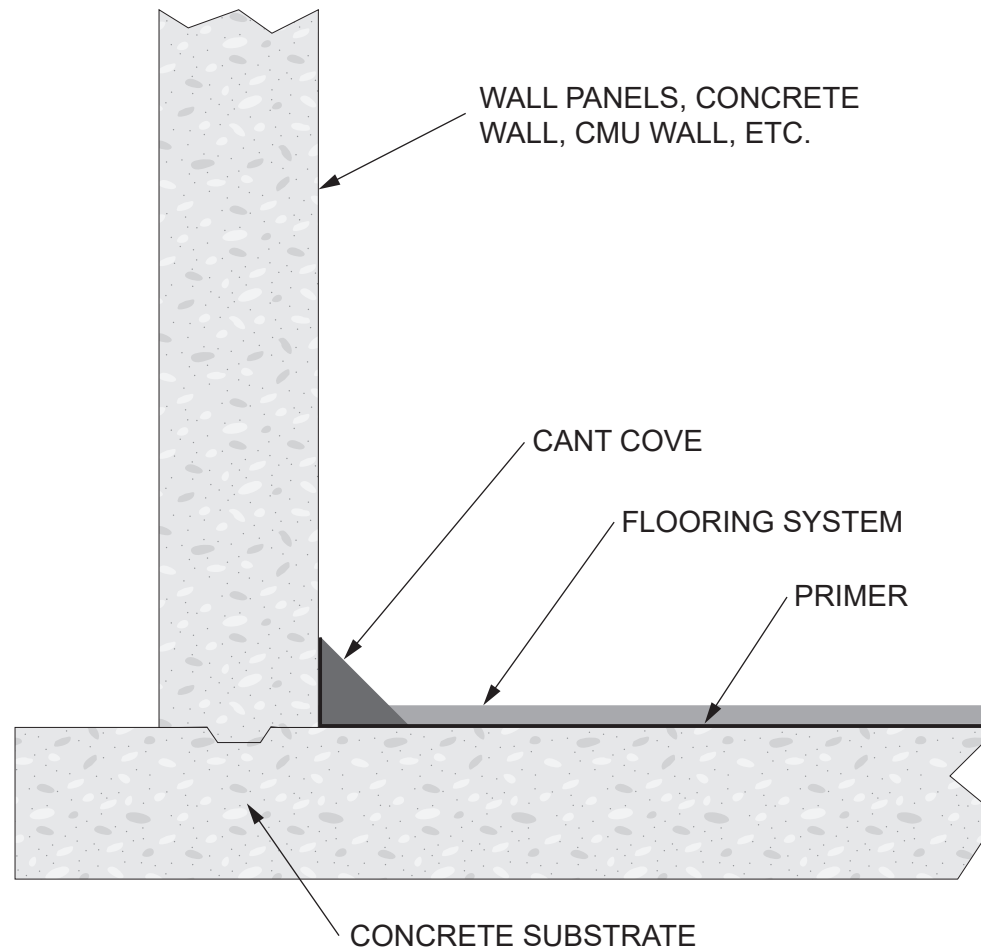
Project: Standard Cove Base Transition
to Pre-Fabricated Wall System

Drawn by:
K. Kirby

Scale:
NTS

Date:
03/30/2020

Drawing/Index No.
FLOR_cove-to-prefab-03302020



Note: This detail is utilized in the specification and design of fluid-applied flooring, in both new and retrofit applications. It is provided to show a generally recommended procedure for dealing with the condition shown. It will not and cannot provide a specific solution for every condition likely to be encountered in field application. Where field conditions differ, the use of applicable portions of the detail shown or its adaptation by an experienced and conscientious applicator should result in a quality project.



2728 Empire Central
Dallas, Texas 75236
(214)-353-1600
www.neogard.com

Project:

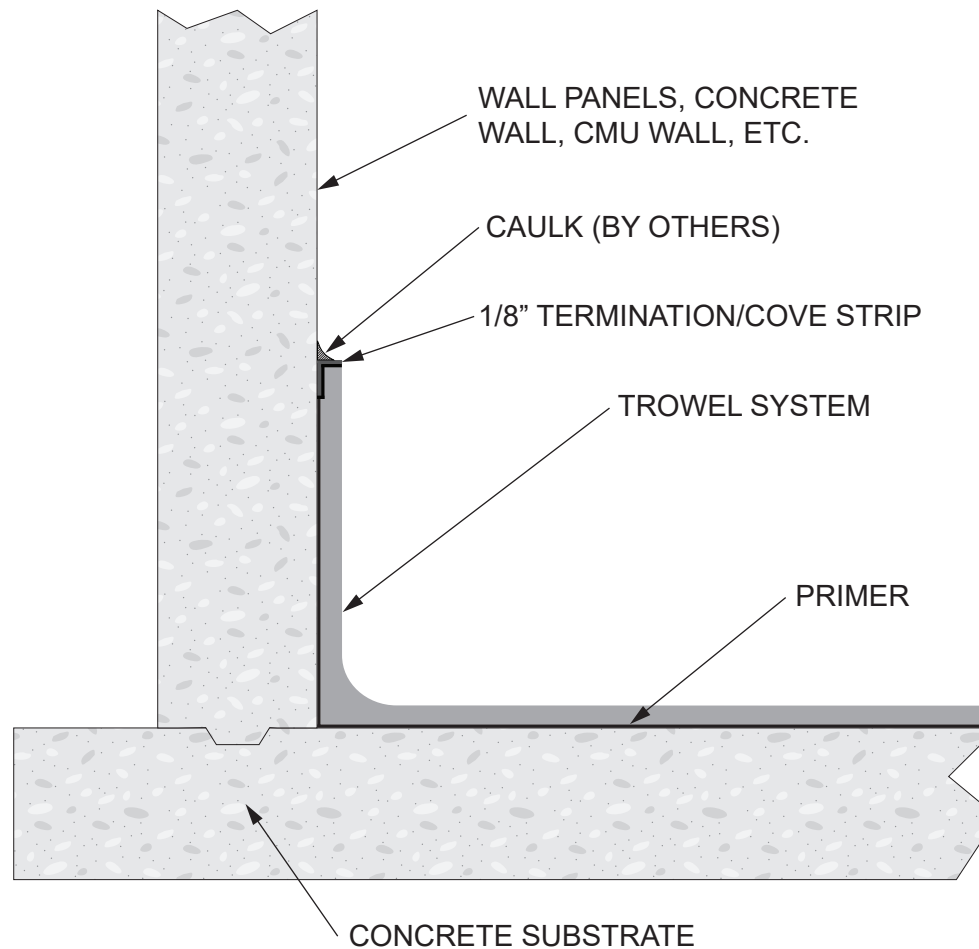
Horizontal/Vertical Termination Cant Cove

Drawn by:
K. Kirby

Scale:
NTS

Date:
03/30/2020

Drawing/Index No.
FLOR_hv-term-cant-cove-03302020



Note: This detail is utilized in the specification and design of fluid-applied flooring, in both new and retrofit applications. It is provided to show a generally recommended procedure for dealing with the condition shown. It will not and cannot provide a specific solution for every condition likely to be encountered in field application. Where field conditions differ, the use of applicable portions of the detail shown or its adaptation by an experienced and conscientious applicator should result in a quality project.



2728 Empire Central
Dallas, Texas 75236
(214)-353-1600
www.neogard.com

Project:

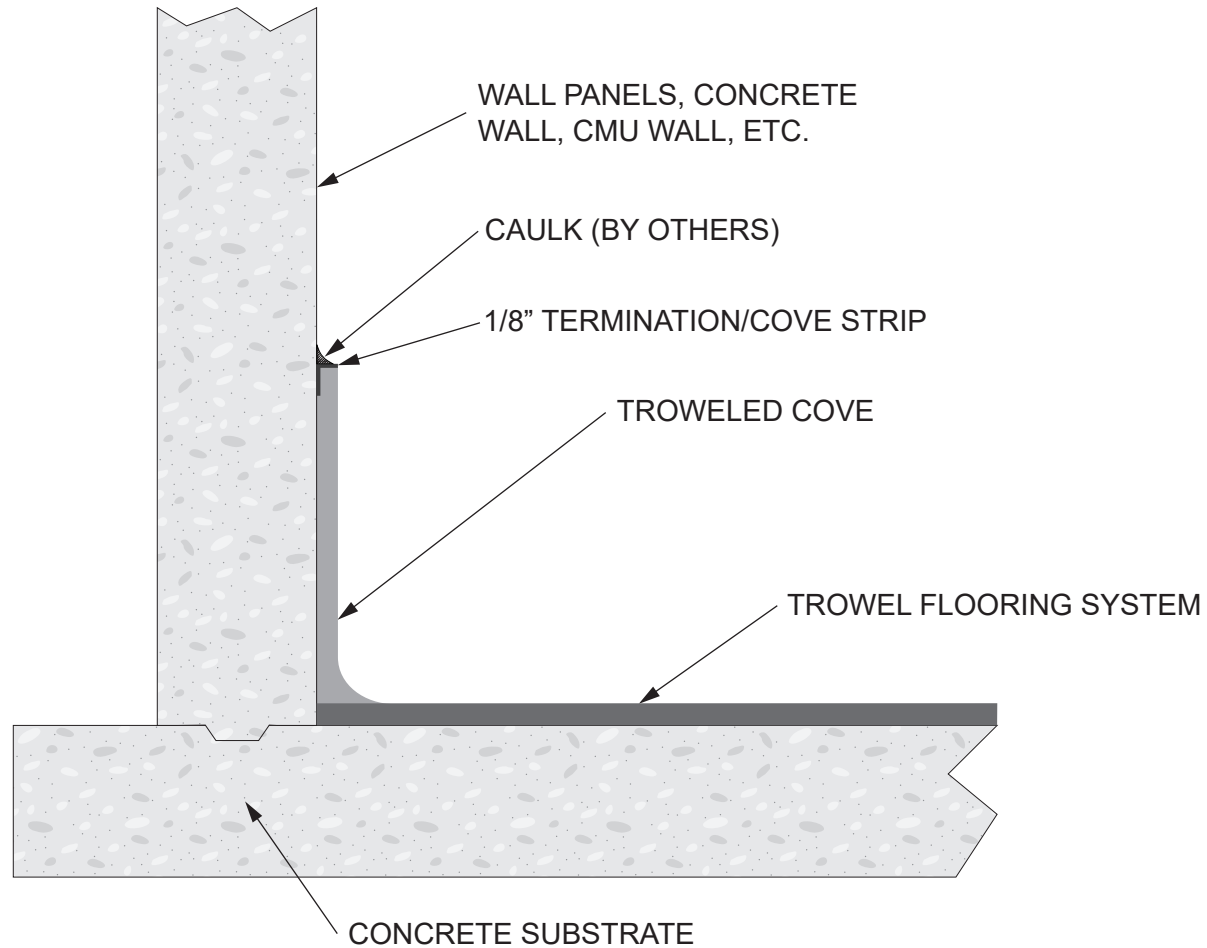
Standard Trowel Cove Base

Drawn by:
K. Kirby

Scale:
NTS

Date:
03/30/2020

Drawing/Index No.
FLOR_standard-cove-03302020



Note: This detail is utilized in the specification and design of fluid-applied flooring, in both new and retrofit applications. It is provided to show a generally recommended procedure for dealing with the condition shown. It will not and cannot provide a specific solution for every condition likely to be encountered in field application. Where field conditions differ, the use of applicable portions of the detail shown or its adaptation by an experienced and conscientious applicator should result in a quality project.



2728 Empire Central
Dallas, Texas 75236
(214)-353-1600
www.neogard.com

Project:

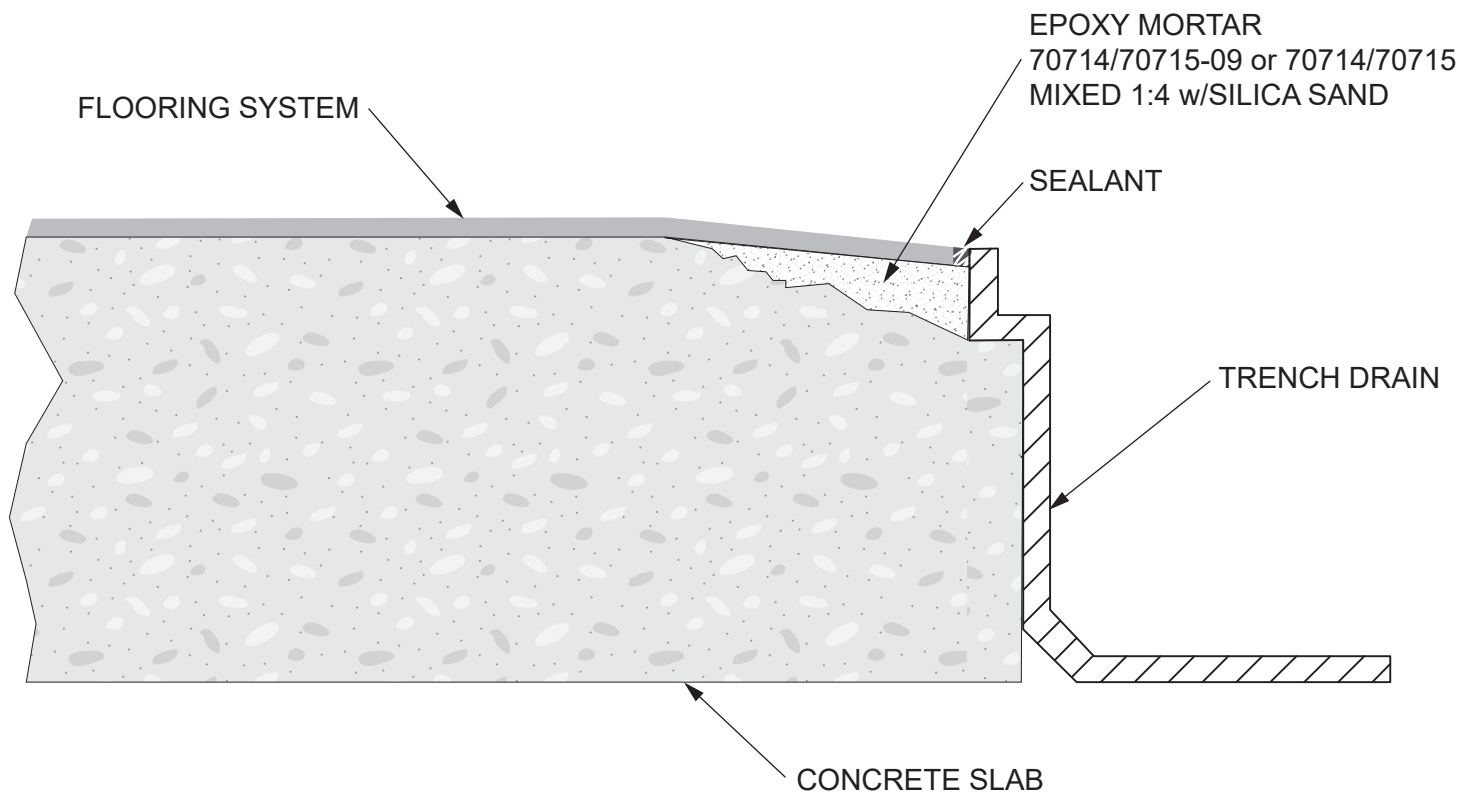
Standard Smooth Troweled Flooring Cove Base

Drawn by:
K. Kirby

Scale:
NTS

Date:
03/30/2020

Drawing/Index No.
FLOR_standard-smooth-troweled-03302020



Note: This detail is utilized in the specification and design of fluid-applied flooring, in both new and retrofit applications. It is provided to show a generally recommended procedure for dealing with the condition shown. It will not and cannot provide a specific solution for every condition likely to be encountered in field application. Where field conditions differ, the use of applicable portions of the detail shown or its adaptation by an experienced and conscientious applicator should result in a quality project.



2728 Empire Central
Dallas, Texas 75236
(214)-353-1600
www.neogard.com

Project:

Prefabricated Trench Drain

Drawn by:
K. Kirby

Scale:
NTS

Date:
03/30/2020

Drawing/Index No.
FLOR_trench-drain-03302020