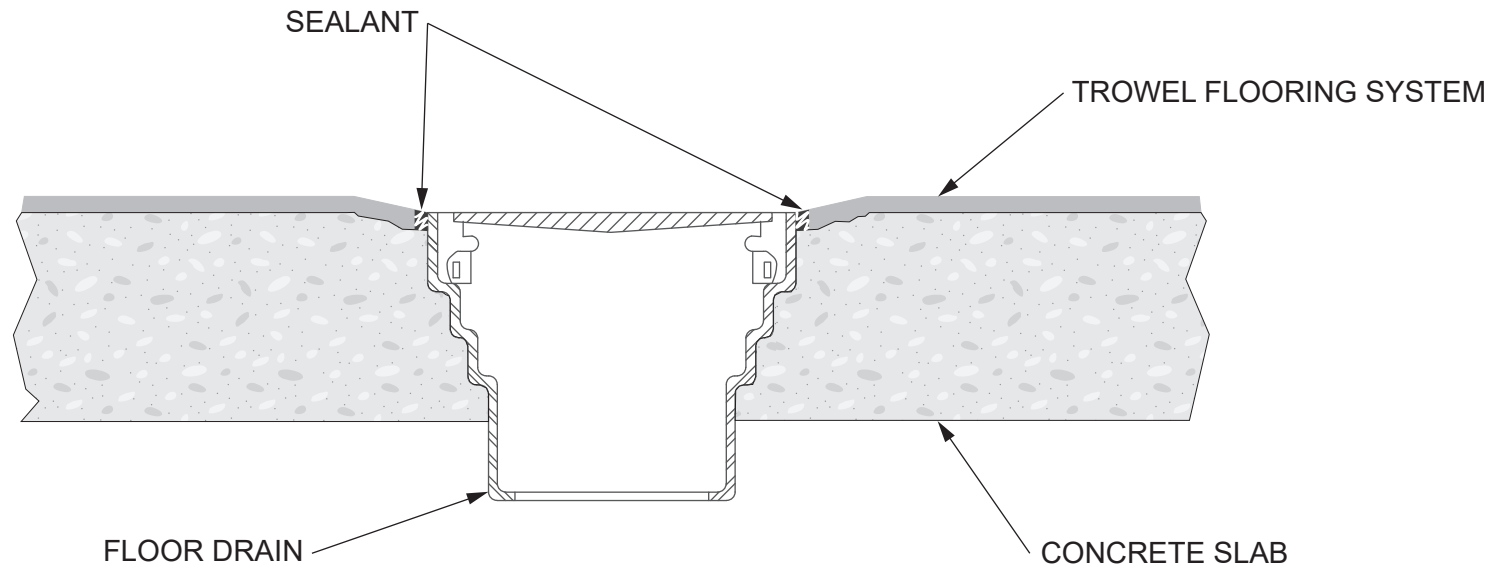


Floor-Gard

Table of Contents

Detail, Area Drain	Detail Drawings	English	2
Detail, Cove to Prefabricated Wall	Detail Drawings	English	3
Detail, Expansion/Isolation joint	Detail Drawings	English	4
Detail, Horizontal/Vertical Termination Cant Cove	Detail Drawings	English	5
Detail, Horizontal/Vertical Termination w/o Cove Strip	Detail Drawings	English	6
Detail, Major Concrete Repair	Detail Drawings	English	7
Detail, Crack with No Movement	Detail Drawings	English	8
Detail, Existing Saw Cut Joint Treatment	Detail Drawings	English	9
Detail, Smooth Troweled Cove Base	Detail Drawings	English	10
Detail, Flooring Area Drain	Detail Drawings	English	11
Detail, Control Joint	Detail Drawings	English	12
Detail, Prefabricated Trench Drain	Detail Drawings	English	13



Note: This detail is utilized in the specification and design of fluid-applied flooring, in both new and retrofit applications. It is provided to show a generally recommended procedure for dealing with the condition shown. It will not and cannot provide a specific solution for every condition likely to be encountered in field application. Where field conditions differ, the use of applicable portions of the detail shown or its adaptation by an experienced and conscientious applicator should result in a quality project.



2728 Empire Central
Dallas, Texas 75236
(214)-353-1600
www.neogard.com

Project:

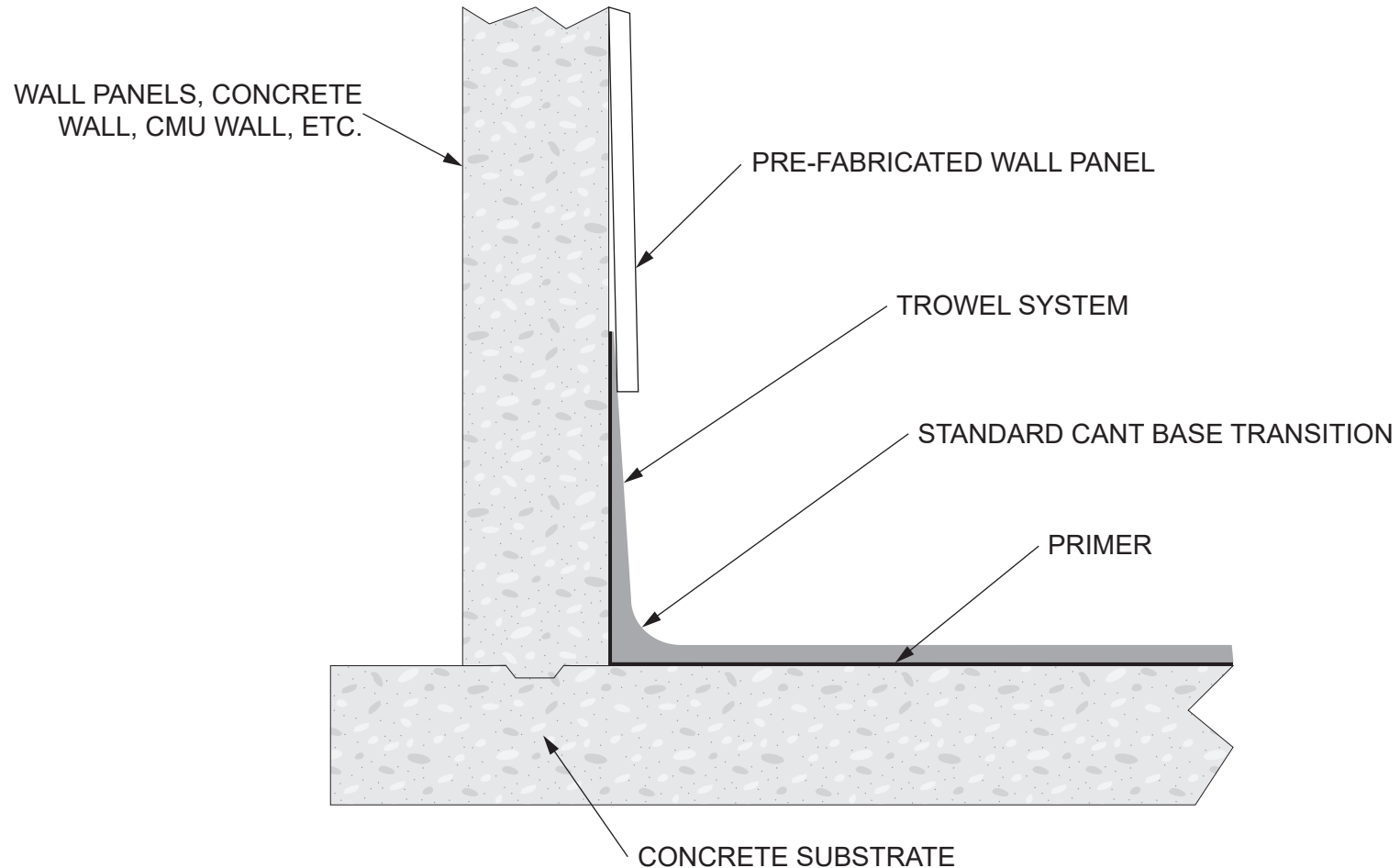
Area Drain Detail

Drawn by:
K. Kirby

Scale:
NTS

Date:
03/30/2020

Drawing/Index No.
FLOR_area-drain-web-03302020



Note: This detail is utilized in the specification and design of fluid-applied flooring, in both new and retrofit applications. It is provided to show a generally recommended procedure for dealing with the condition shown. It will not and cannot provide a specific solution for every condition likely to be encountered in field application. Where field conditions differ, the use of applicable portions of the detail shown or its adaptation by an experienced and conscientious applicator should result in a quality project.



2728 Empire Central
Dallas, Texas 75236
(214)-353-1600
www.neogard.com

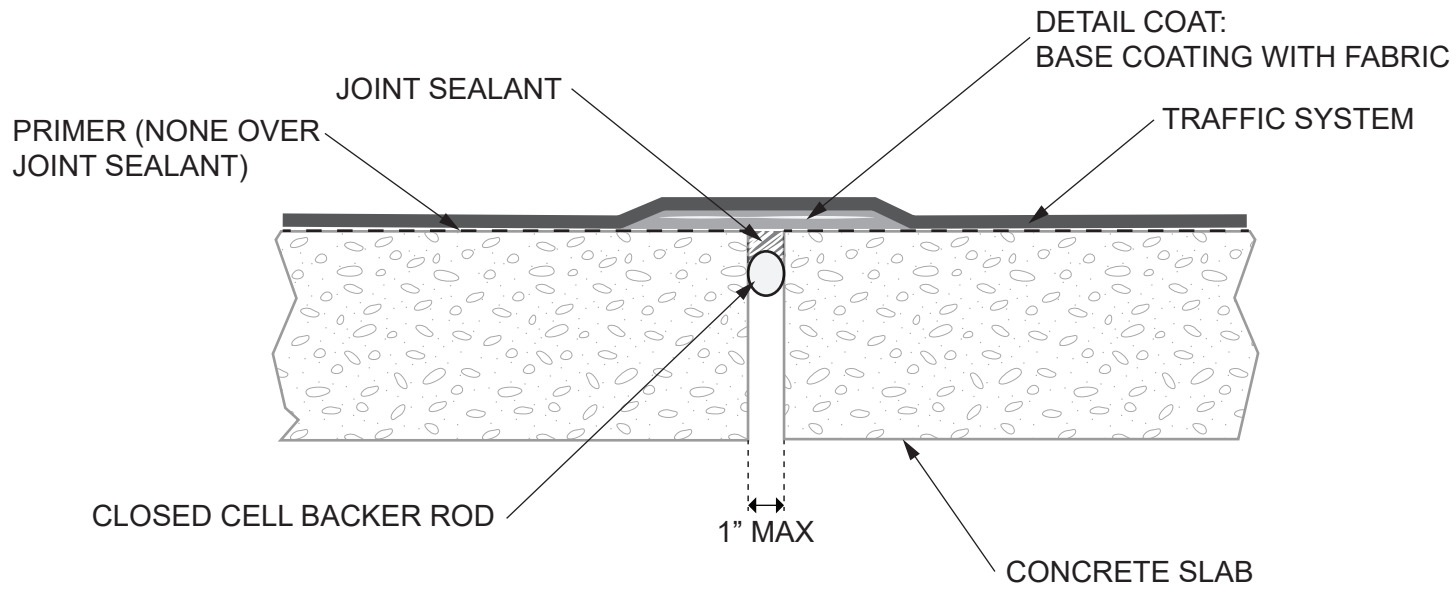
Project: Standard Cove Base Transition
to Pre-Fabricated Wall System

Drawn by:
K. Kirby

Scale:
NTS

Date:
03/30/2020

Drawing/Index No.
FLOR_cove-to-prefab-03302020



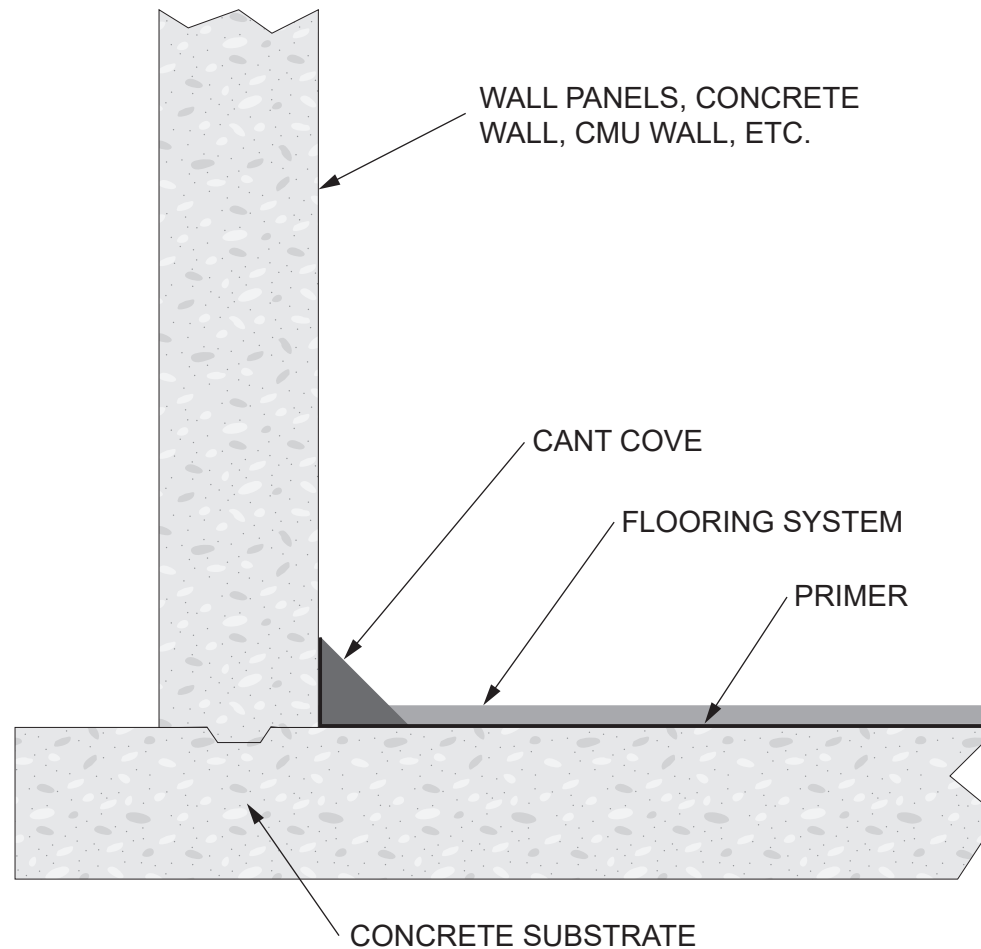
Note: This detail is utilized in the specification and design of fluid-applied flooring, in both new and retrofit applications. It is provided to show a generally recommended procedure for dealing with the condition shown. It will not and cannot provide a specific solution for every condition likely to be encountered in field application. Where field conditions differ, the use of applicable portions of the detail shown or its adaptation by an experienced and conscientious applicator should result in a quality project.



2728 Empire Central
Dallas, Texas 75236
(214)-353-1600
www.neogard.com

Project:
Expansion/Isolation Joint

Drawn by: K. Kirby	Scale: NTS	Date: 03/30/2020	Drawing/Index No. FLOR_ex-iso-joint-03302020
-----------------------	---------------	---------------------	---



Note: This detail is utilized in the specification and design of fluid-applied flooring, in both new and retrofit applications. It is provided to show a generally recommended procedure for dealing with the condition shown. It will not and cannot provide a specific solution for every condition likely to be encountered in field application. Where field conditions differ, the use of applicable portions of the detail shown or its adaptation by an experienced and conscientious applicator should result in a quality project.



2728 Empire Central
Dallas, Texas 75236
(214)-353-1600
www.neogard.com

Project:

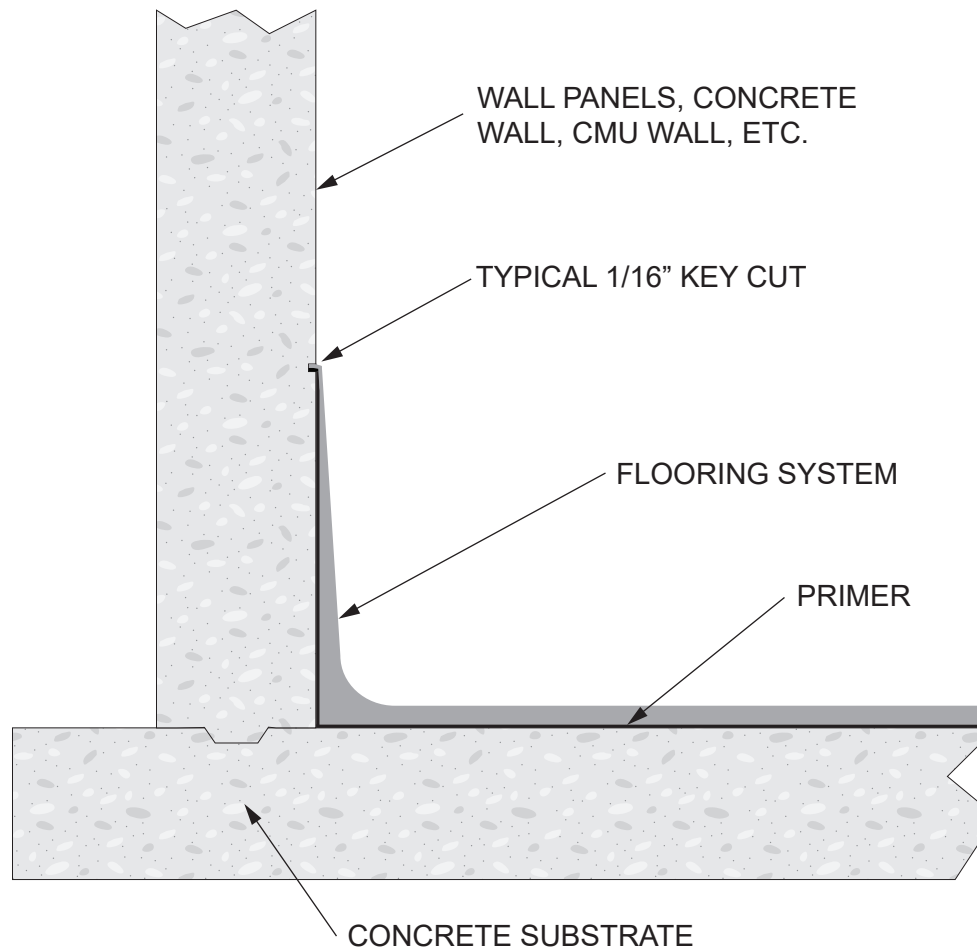
Horizontal/Vertical Termination Cant Cove

Drawn by:
K. Kirby

Scale:
NTS

Date:
03/30/2020

Drawing/Index No.
FLOR_hv-term-cant-cove-03302020



Note: This detail is utilized in the specification and design of fluid-applied flooring, in both new and retrofit applications. It is provided to show a generally recommended procedure for dealing with the condition shown. It will not and cannot provide a specific solution for every condition likely to be encountered in field application. Where field conditions differ, the use of applicable portions of the detail shown or its adaptation by an experienced and conscientious applicator should result in a quality project.



2728 Empire Central
Dallas, Texas 75236
(214)-353-1600
www.neogard.com

Project:

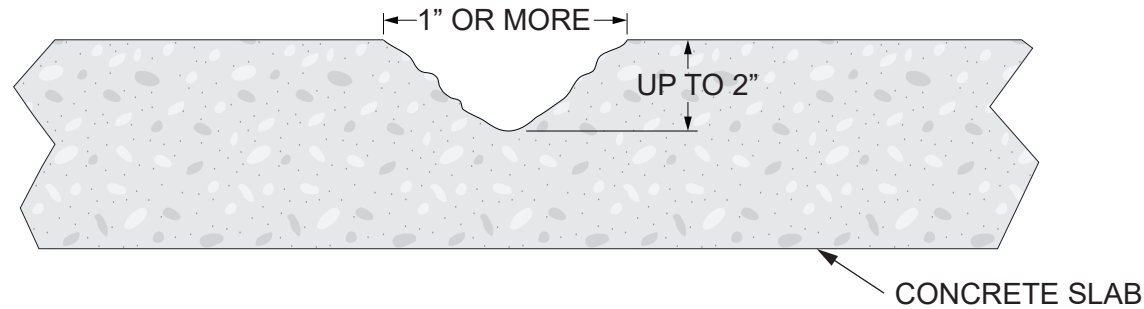
Horizontal/Vertical Termination Without Cove Strip

Drawn by:
K. Kirby

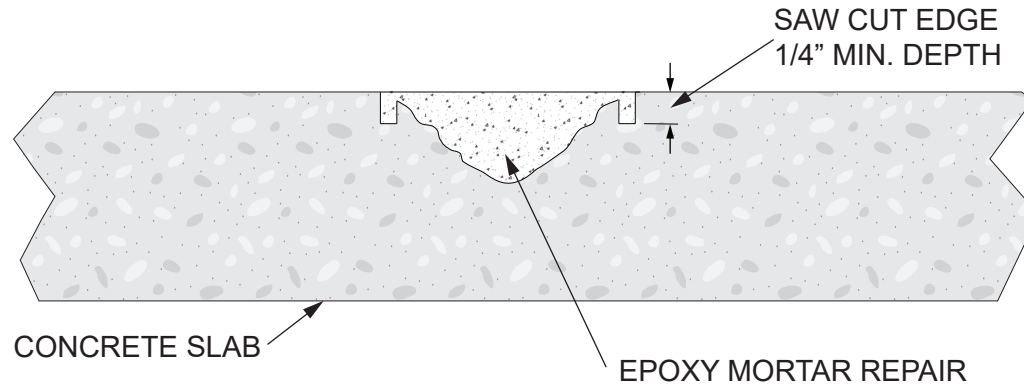
Scale:
NTS

Date:
03/30/2020

Drawing/Index No.
FLOR_hv-term-wo-cove-strip-03302020



EXISTING CONDITION



EPOXY MORTAR REPAIR

- Clean and solvent wipe concrete.
- Mix 70714/70715 or 70714/70715-09 with 20/40 silica sand at a ratio of 1:4 and fill, pack and trowel flush.

Note: This detail is utilized in the specification and design of fluid-applied flooring, in both new and retrofit applications. It is provided to show a generally recommended procedure for dealing with the condition shown. It will not and cannot provide a specific solution for every condition likely to be encountered in field application. Where field conditions differ, the use of applicable portions of the detail shown or its adaptation by an experienced and conscientious applicator should result in a quality project.



2728 Empire Central
Dallas, Texas 75236
(214)-353-1600
www.neogard.com

Project:

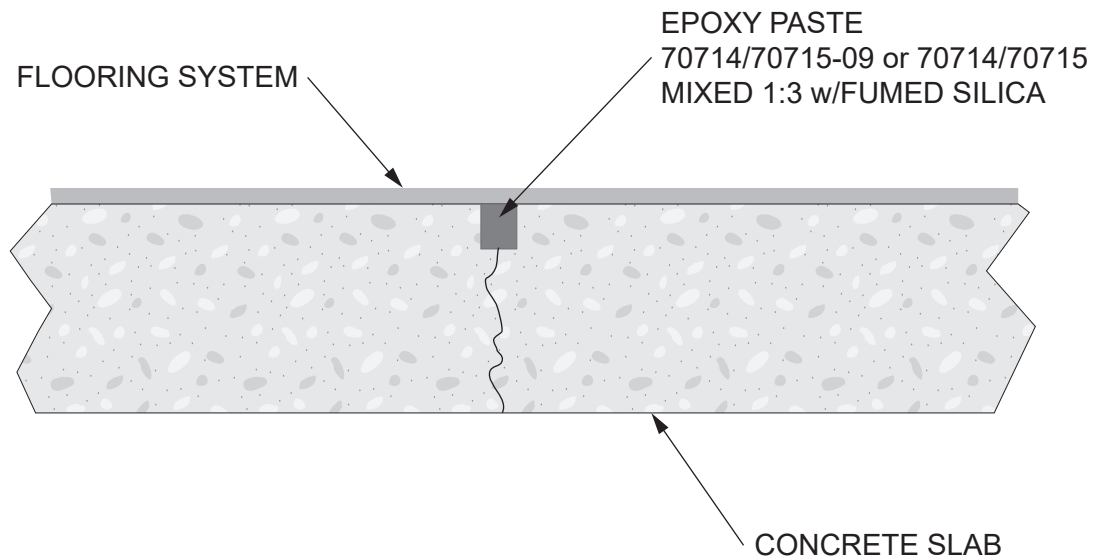
Major Concrete Repair

Drawn by:
K. Kirby

Scale:
NTS

Date:
03/30/2020

Drawing/Index No.
FLOR_major-concrete-03302020



Note: This detail is utilized in the specification and design of fluid-applied flooring, in both new and retrofit applications. It is provided to show a generally recommended procedure for dealing with the condition shown. It will not and cannot provide a specific solution for every condition likely to be encountered in field application. Where field conditions differ, the use of applicable portions of the detail shown or its adaptation by an experienced and conscientious applicator should result in a quality project.



2728 Empire Central
Dallas, Texas 75236
(214)-353-1600
www.neogard.com

Project:

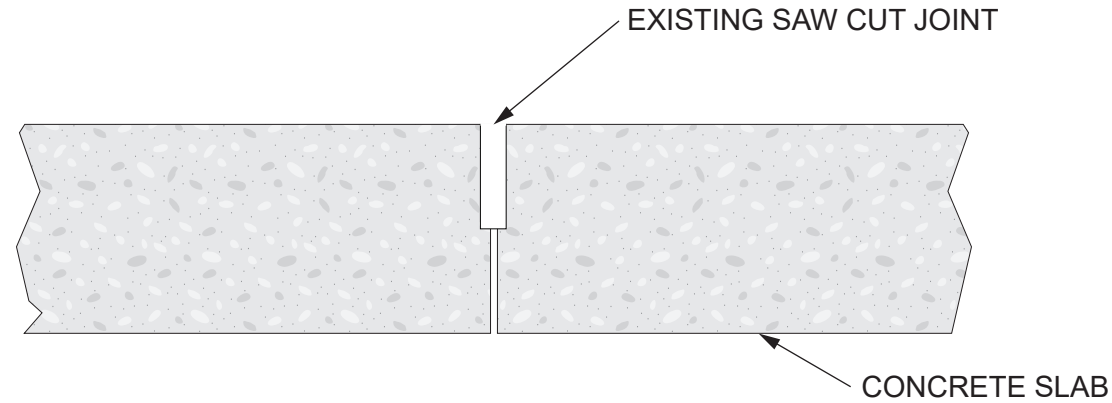
Random Crack Detail Without Movement

Drawn by:
K. Kirby

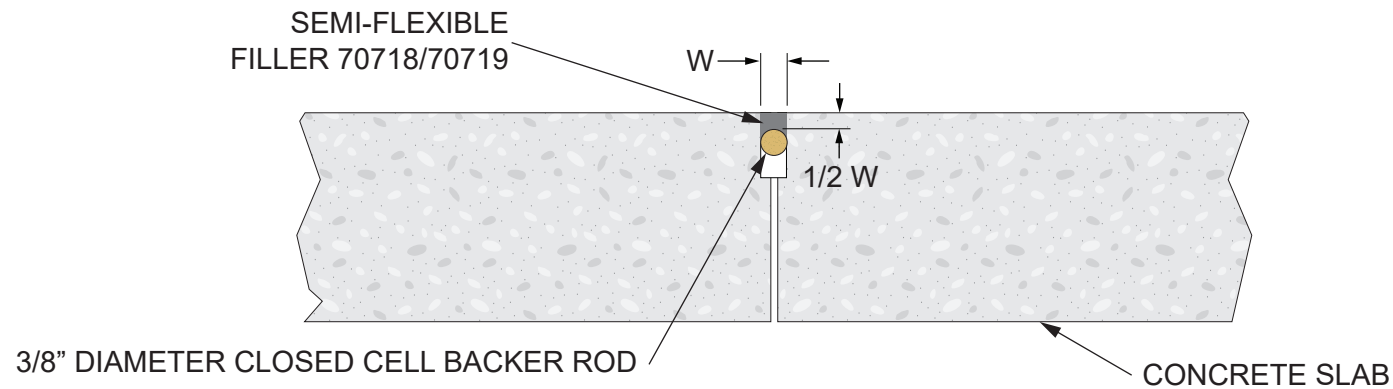
Scale:
NTS

Date:
03/30/2020

Drawing/Index No.
FLOR_random-crack-no-move-03302020



EXISTING CONDITION



JOINT TREATMENT

Note: This detail is utilized in the specification and design of fluid-applied flooring, in both new and retrofit applications. It is provided to show a generally recommended procedure for dealing with the condition shown. It will not and cannot provide a specific solution for every condition likely to be encountered in field application. Where field conditions differ, the use of applicable portions of the detail shown or its adaptation by an experienced and conscientious applicator should result in a quality project.



2728 Empire Central
Dallas, Texas 75236
(214)-353-1600
www.neogard.com

Project:

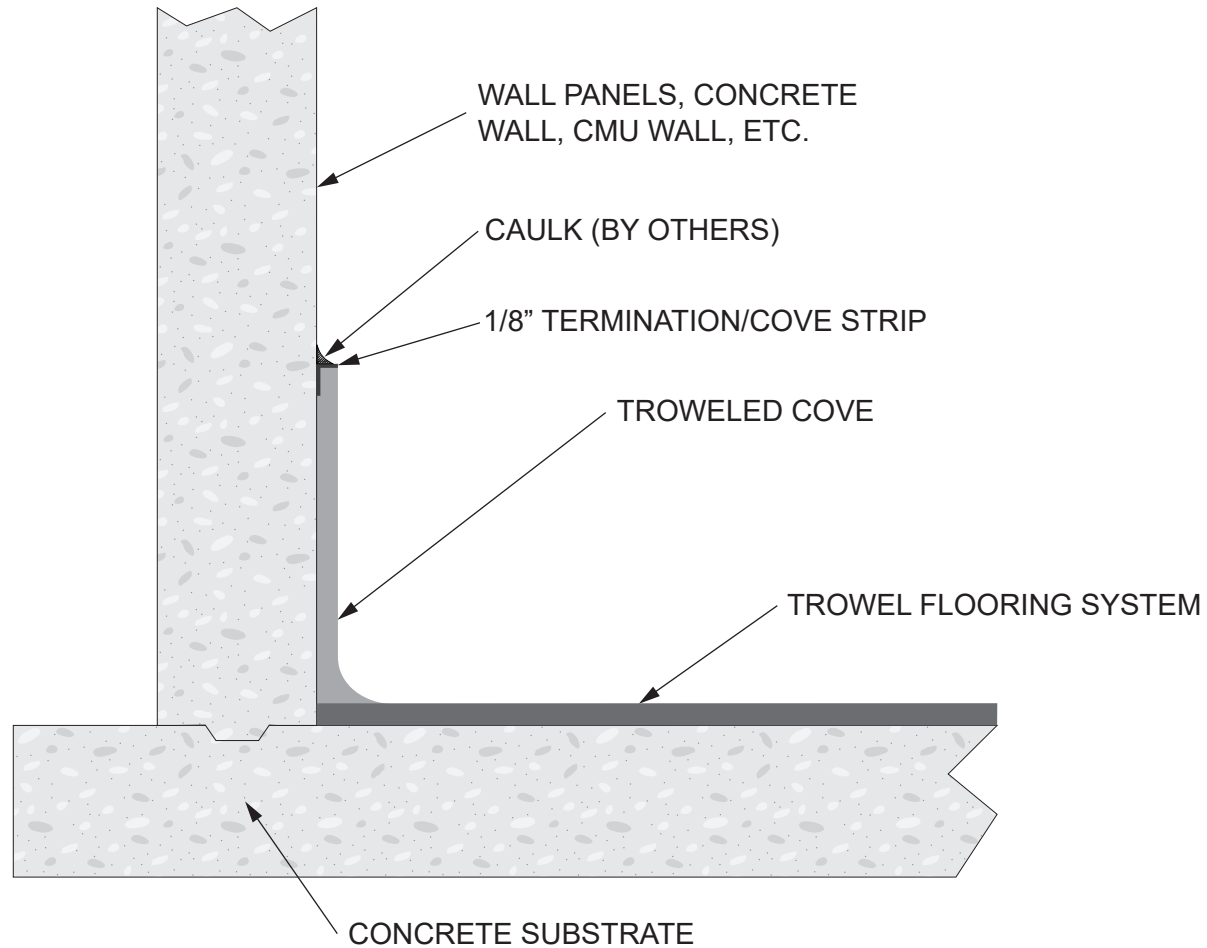
Existing Saw Cut Joint Treatment

Drawn by:
K. Kirby

Scale:
NTS

Date:
03/30/2020

Drawing/Index No.
FLOR_saw-cut-joint-03302020



Note: This detail is utilized in the specification and design of fluid-applied flooring, in both new and retrofit applications. It is provided to show a generally recommended procedure for dealing with the condition shown. It will not and cannot provide a specific solution for every condition likely to be encountered in field application. Where field conditions differ, the use of applicable portions of the detail shown or its adaptation by an experienced and conscientious applicator should result in a quality project.



2728 Empire Central
Dallas, Texas 75236
(214)-353-1600
www.neogard.com

Project:

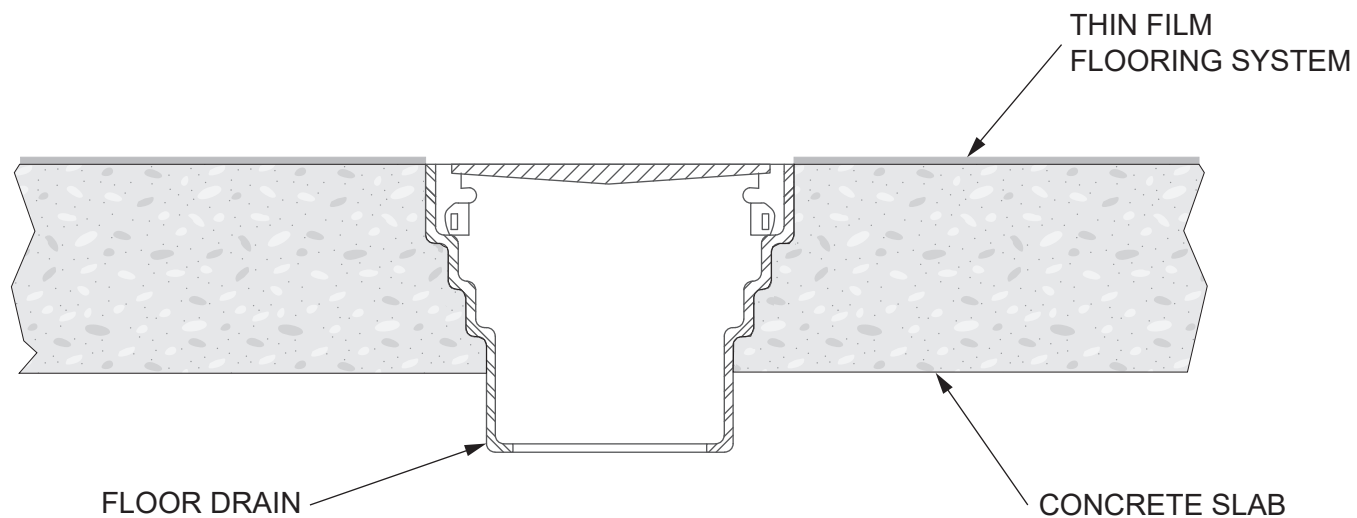
Standard Smooth Troweled Flooring Cove Base

Drawn by:
K. Kirby

Scale:
NTS

Date:
03/30/2020

Drawing/Index No.
FLOR_standard-smooth-troweled-03302020



Note: This detail is utilized in the specification and design of fluid-applied flooring, in both new and retrofit applications. It is provided to show a generally recommended procedure for dealing with the condition shown. It will not and cannot provide a specific solution for every condition likely to be encountered in field application. Where field conditions differ, the use of applicable portions of the detail shown or its adaptation by an experienced and conscientious applicator should result in a quality project.



2728 Empire Central
Dallas, Texas 75236
(214)-353-1600
www.neogard.com

Project:

Thin Film Flooring Area Drain

Drawn by:

K. Kirby

Scale:

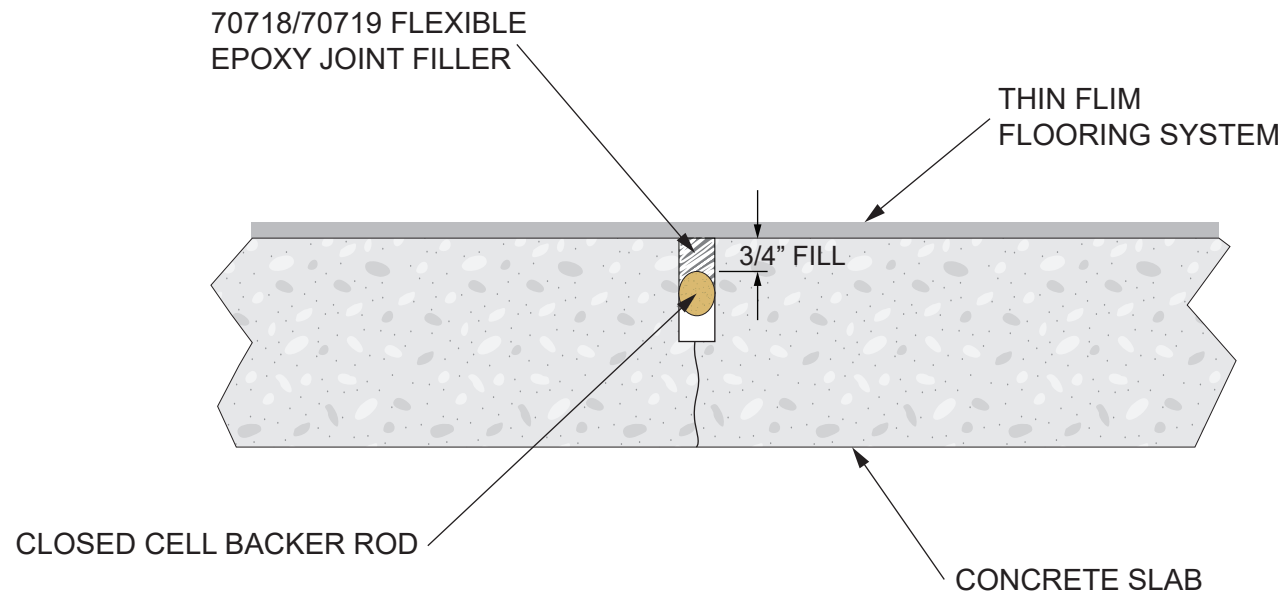
NTS

Date:

03/30/2020

Drawing/Index No.

FLOR_thin-film-area-drain-03302020



Note: This detail is utilized in the specification and design of fluid-applied flooring, in both new and retrofit applications. It is provided to show a generally recommended procedure for dealing with the condition shown. It will not and cannot provide a specific solution for every condition likely to be encountered in field application. Where field conditions differ, the use of applicable portions of the detail shown or its adaptation by an experienced and conscientious applicator should result in a quality project.



2728 Empire Central
Dallas, Texas 75236
(214)-353-1600
www.neogard.com

Project:

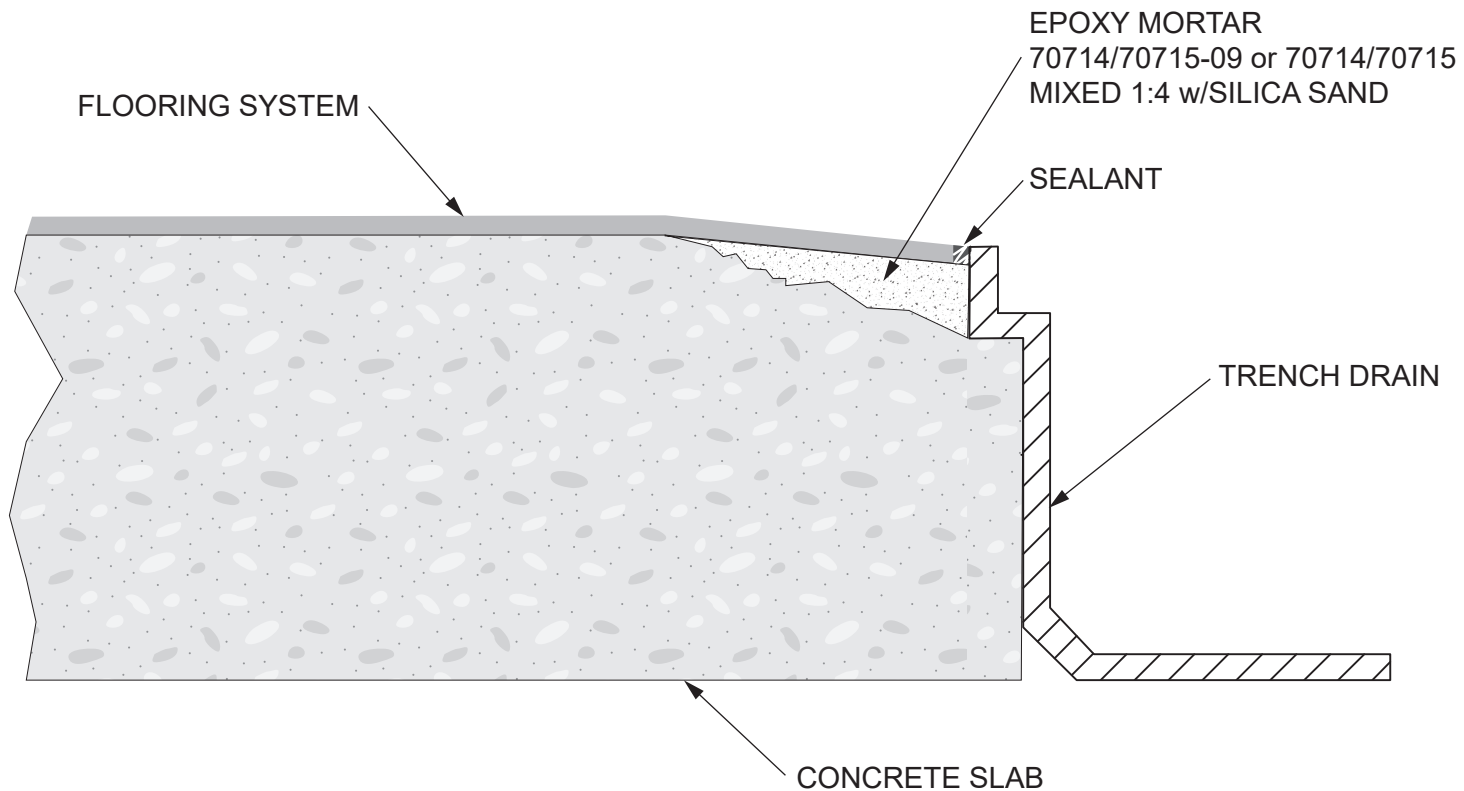
Thin Film Flooring Control Joint

Drawn by:
K. Kirby

Scale:
NTS

Date:
03/30/2020

Drawing/Index No.
FLOR_thin-film-control-joint-03302020



Note: This detail is utilized in the specification and design of fluid-applied flooring, in both new and retrofit applications. It is provided to show a generally recommended procedure for dealing with the condition shown. It will not and cannot provide a specific solution for every condition likely to be encountered in field application. Where field conditions differ, the use of applicable portions of the detail shown or its adaptation by an experienced and conscientious applicator should result in a quality project.



2728 Empire Central
Dallas, Texas 75236
(214)-353-1600
www.neogard.com

Project:

Prefabricated Trench Drain

Drawn by:
K. Kirby

Scale:
NTS

Date:
03/30/2020

Drawing/Index No.
FLOR_trench-drain-03302020